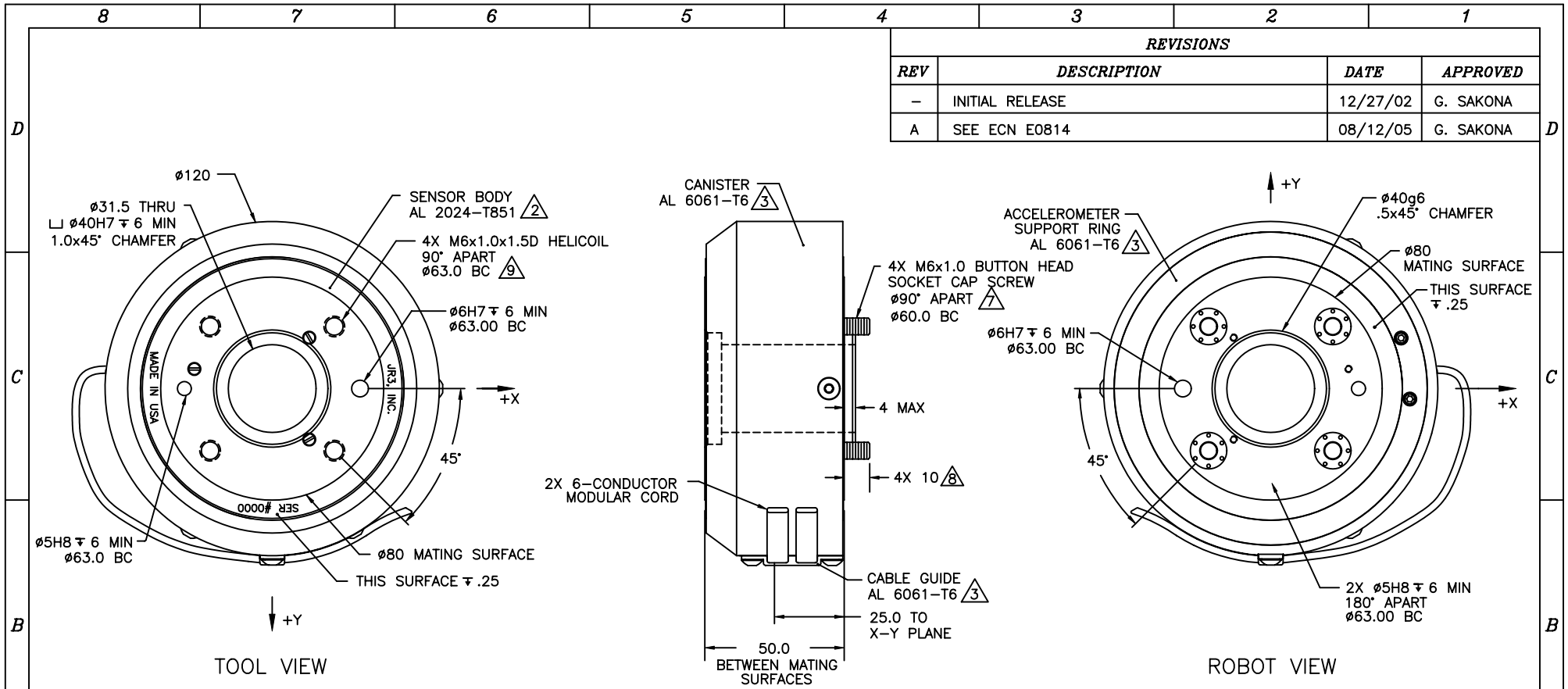


REVISIONS			
REV	DESCRIPTION	DATE	APPROVED
-	INITIAL RELEASE	12/27/02	G. SAKONA
A	SEE ECN E0814	08/12/05	G. SAKONA



- NOTES:
- ALL DIMENSIONS ARE IN MILLIMETERS UNLESS OTHERWISE NOTED.
 - TYPE 2, CLASS 2, BLACK ANODIZE.
 - TYPE 2, CLASS 2, BLUE ANODIZE.
 - AVAILABLE LOAD RATINGS INCLUDE: 100, 200 AND 400N (25, 50 AND 100lb),
WHERE: FULL SCALE Fx, Fy = SENSOR RATING
FULL SCALE Fz = SENSOR RATING * 2
FULL SCALE Mx, My, Mz = SENSOR RATING * SENSOR BODY NOMINAL DIAMETER (100mm, 4.0in)
 - AXES SHOWN ASSUME OPPOSITE SIDE HELD FIXED.
 - ROBOT VIEW IS RIGHT HAND RULE (JR3 STANDARD). THIS FORCES TOOL VIEW TO BE LEFT HAND RULE.
 - SCREWS ARE CAPTIVE, FREE TO ROTATE, AND ACCESSIBLE WITH HEX KEY THRU SENSOR TOOL SIDE.
 - LENGTH OF CAPTIVE BOLT PROJECTION MAY BE ALTERED PER CUSTOMER REQUEST.
 - MAXIMUM ALLOWED SCREW PENETRATION INTO SENSOR IS 15mm (.59in).
 - TORQUE ALL MOUNTING SCREWS TO 10NM (88inlb) IN THREE EQUAL STEPS FOLLOWING AN A-C-E-B-D-F SEQUENCE.

TITLE: INTERFACE, 120M50 SENSOR, 12DOF, I63 BOLT PATTERN			
MAT'L: AS SHOWN	MODEL:	DRAWN: GCS	
TOLERANCES: (UNLESS OTHERWISE NOTED) X = ±.25mm .X = ±.10mm .XX = ±.025mm ANGLES = ±0.1°		SCALE: 3/4	
		DWG SIZE: B	
		DWG NO: 7525	REV: A
JR3, INC. WOODLAND, CA 95776		SHEET 1 OF 1	

AUTHORIZED COPY