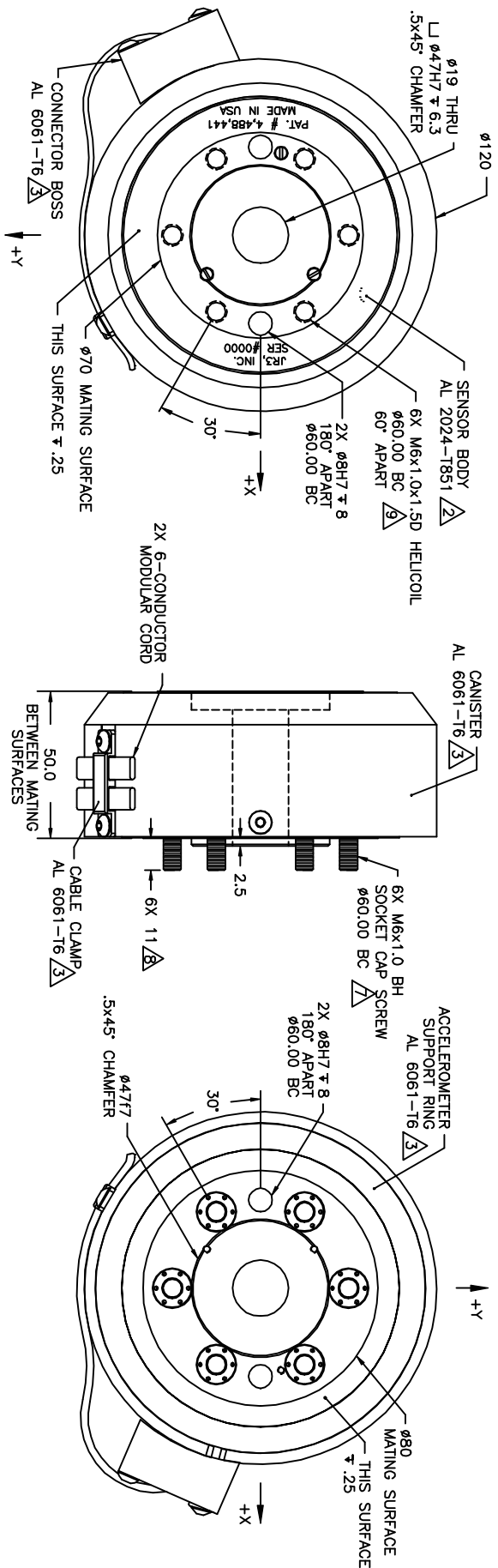


REVOLUTIONS			
REV	DESCRIPTION	DATE	APPROVED
-	INITIAL RELEASE	09/08/98	G. SAKONA



TOOL VIEW

ROBOT VIEW

NOTES:

- ALL DIMENSIONS ARE IN MILLIMETERS UNLESS OTHERWISE NOTED.
- TYPE 2, CLASS 2, BLACK ANODIZE.
- TYPE 2, CLASS 2, BLUE ANODIZE.
- AVAILABLE LOAD RATINGS INCLUDE: 100, 200 AND 400N (25, 50 AND 100lb), WHERE:
  - F<sub>Z</sub> = SENSOR RATING \* 2
  - F<sub>X</sub> = SENSOR RATING
  - F<sub>Y</sub> = SENSOR RATING
  - F<sub>Z</sub> = SENSOR RATING \* 2
- AXES SHOWN ASSUME OPPOSITE SIDE HELD FIXED.
- ROBOT VIEW IS RIGHT HAND RULE (JRS STANDARD). THIS FORCES TOOL VIEW TO BE LEFT HAND RULE. SCREWS ARE CAPTIVE, FREE TO ROTATE, AND ACCESSIBLE WITH HEX KEY THRU SENSOR TOOL SIDE.
- LENGTH OF CAPTIVE BOLT PROJECTION MAY BE ALTERED PER CUSTOMER REQUEST.
- MAXIMUM ALLOWED SCREW PENETRATION INTO SENSOR IS 15mm (.59in).
- TORQUE ALL MOUNTING SCREWS TO 10NM (88inlb) IN THREE EQUAL STEPS FOLLOWING AN A-C-E-B-B-D-F SEQUENCE.

<b>TITLE:</b>			
INTERFACE, 120M50 SENSOR, 12DOF, U760 BOLT PATTERN			
<b>MAT'L:</b>	AS SHOWN	<b>MODEL:</b>	120M50A-U760
<b>TOLERANCES:</b>	(UNLESS OTHERWISE NOTED)	<b>DRAWN:</b>	GCS
X = ±.25mm		<b>SCALE:</b>	3/4
.XX = ±.10mm		<b>DWG SIZE:</b>	B
ANGLES = ±0.1°		<b>DWG NO.:</b>	7511
		<b>REV:</b>	-
		<b>SHEET</b>	1 OF 1