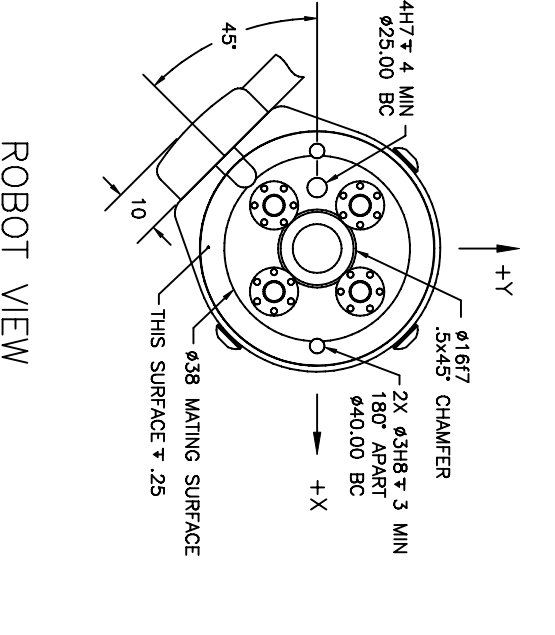
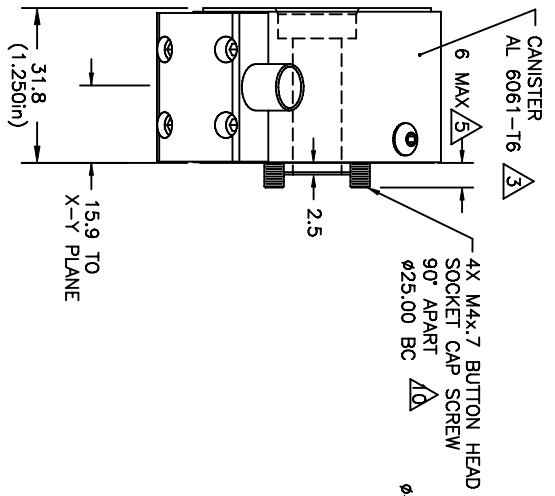
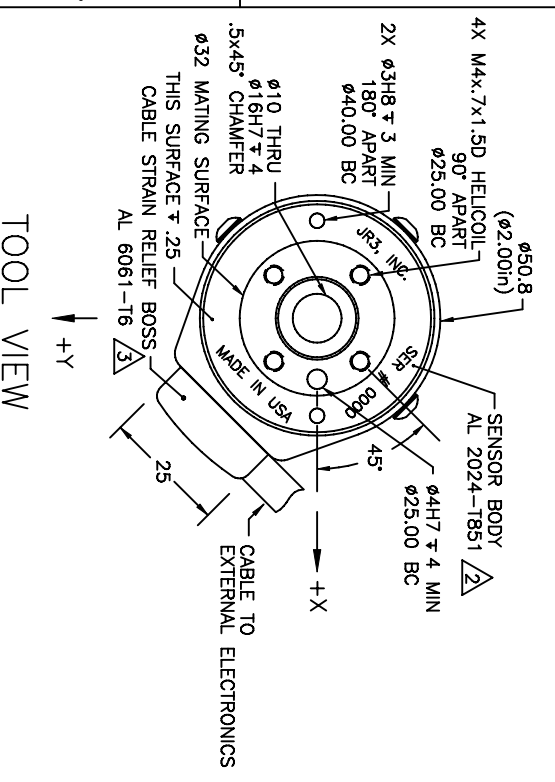


REVOLUTIONS			
REV	DESCRIPTION	DATE	APPROVED
-	INITIAL RELEASE	09/22/06	G. SAKONA



NOTES:

- ALL DIMENSIONS ARE IN MILLIMETERS UNLESS OTHERWISE NOTED.
- TYPE 2, CLASS 2, BLACK ANODIZE.
- TYPE 2, CLASS 2, BLUE ANODIZE.
- AVAILABLE LOAD RATINGS INCLUDE: 10, 15, AND 25lb, (40, 63, AND 100N) WHERE:
  - FULL SCALE Fx, Fy = LOAD RATING
  - FULL SCALE Fz = LOAD RATING \* 2
  - FULL SCALE Mx, My, Mz = LOAD RATING \* NOMINAL DIAMETER (2.0in, .08M)
- LENGTH OF CAPTIVE SCREW PROJECTION MAY BE ALTERED PER CUSTOMER REQUEST.
- AXES SHOWN ASSUME OPPOSITE SIDE HELD FIXED.
- ROBOT VIEW IS RIGHT HAND RULE (JR3 STANDARD). THIS FORCES TOOL VIEW TO BE LEFT HAND RULE.
- TORQUE MOUNTING SCREWS TO 2.9Nm (25inlb) IN 3 EQUAL STEPS, FOLLOWING AN A-C-B-D SEQUENCE.
- MAXIMUM ALLOWED BOLT PENETRATION INTO SENSOR TOOL SIDE IS 15mm (.60in).
- SCREWS ARE CAPTIVE, FREE TO ROTATE, AND ACCESSIBLE WITH HEX KEY THRU SENSOR TOOL SIDE.

<b>TITLE:</b>		INTERFACE, 20E12 SENSOR, 125, DIRECT CABLE CONNECTION	
<b>MAT'L:</b>	AS SHOWN	<b>MODEL:</b>	20E12A4-1255
<b>TOLERANCES:</b> (UNLESS OTHERWISE NOTED)			
X	±.25mm	<b>DRAWN:</b>	GCS
.XX	±.10mm	<b>SCALE:</b>	1/1 AND NOTED
ANGLES	±0.1°	<b>DWG SIZE:</b>	B
		<b>DWG NO.:</b>	4946
		<b>REV:</b>	-