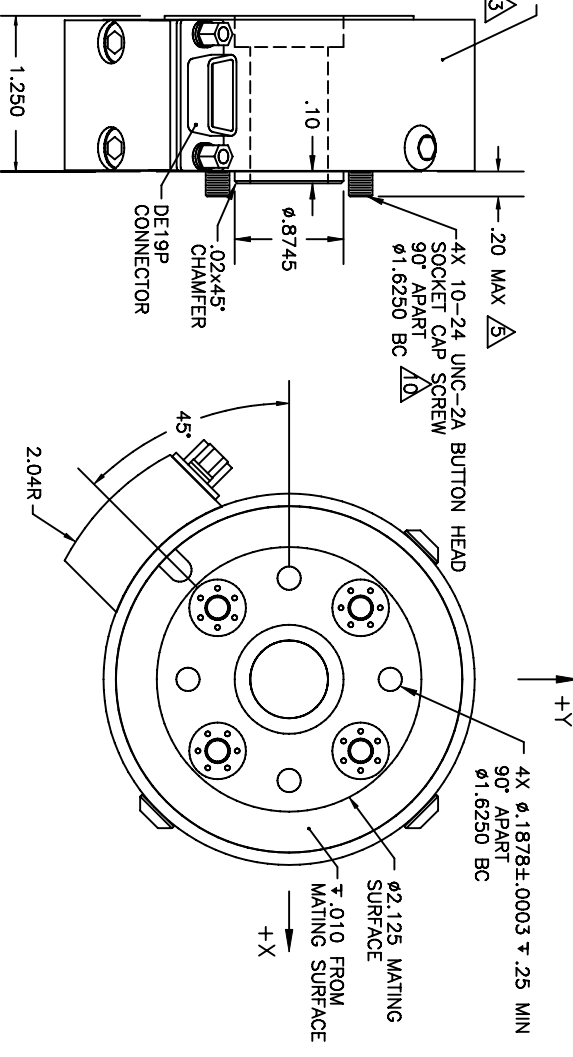
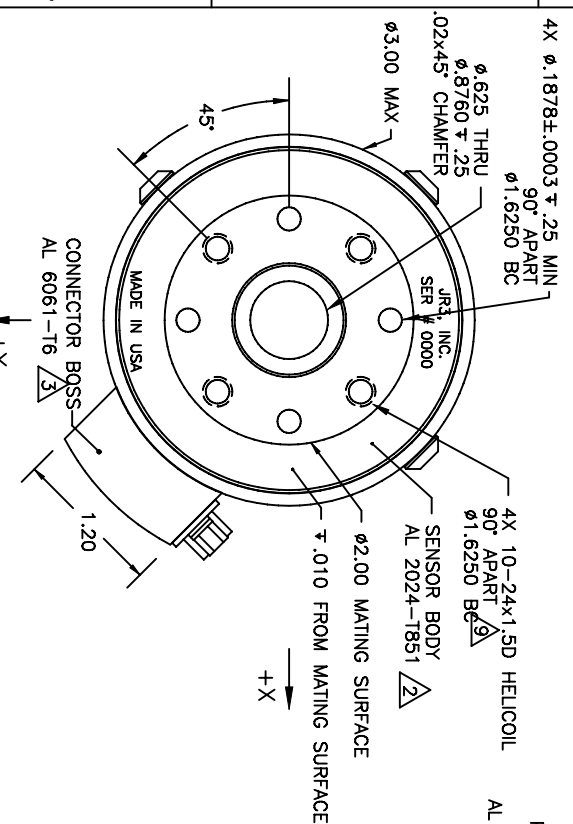


REVISIONS			
REV	DESCRIPTION	DATE	APPROVED
-	INITIALLY RELEASED AS DWG 90066	01/06/93	G. SAKONA
A	SEE ECN E0364	12/07/95	G. SAKONA
B	SEE ECN E0366	12/11/97	G. SAKONA



- NOTES:
- ALL DIMENSIONS ARE IN INCHES UNLESS OTHERWISE NOTED.
  - TYPE 2, CLASS 2, BLACK ANODIZE.
  - TYPE 2, CLASS 2, BLUE ANODIZE.
  - AVAILABLE LOAD CAPACITIES INCLUDE: 15, 25, 50lb, WHERE:
    - FULL SCALE Fx, Fy = LOAD RATING
    - FULL SCALE Fz = LOAD RATING \* 2
    - FULL SCALE Mx, My, Mz = LOAD RATING \* NOMINAL DIAMETER (3.0in)
  - LENGTH OF CAPTIVE BOLT PROJECTION MAY BE ALTERED PER CUSTOMER REQUEST.
  - AXES SHOWN ASSUME OPPOSITE SIDE HELD FIXED.
  - ROBOT VIEW IS RIGHT HAND RULE (JR3 STANDARD). THIS FORCES TOOL VIEW TO BE LEFT HAND RULE.
  - TORQUE MOUNTING SCREWS TO 45inlb IN 15inlb STEPS, FOLLOWING AN A-C-B-D SEQUENCE.
  - MAXIMUM ALLOWABLE SCREW PENETRATION INTO SENSOR TOOL SIDE IS .40in (10mm).
  - SCREWS ARE CAPTIVE, FREE TO ROTATE, AND ACCESSIBLE WITH HEX KEY THRU SENSOR TOOL SIDE.

<b>TITLE:</b> INTERFACE, 30E12 SENSOR, U560 BOLT PATTERN			
<b>MAT'L:</b> AS SHOWN	<b>MODEL:</b>	<b>DRAWN:</b> GCS	<b>SCALE:</b> 1/1 AND NOTED
<b>TOLERANCES:</b> (UNLESS OTHERWISE NOTED)		<b>DWG SIZE:</b> B	<b>DWG NO:</b> 4801
XX $\pm .010$ in	X $\pm .25$ mm		<b>REV:</b> B
XXX $\pm .005$ in	X $\pm .10$ mm		
XXXX $\pm .001$ in	XX $\pm .025$ mm		
ANGLES = $\pm 0.1^\circ$			
<b>JR3, INC. WOODLAND, CA 95776</b>		<b>SHEET 1 OF 1</b>	