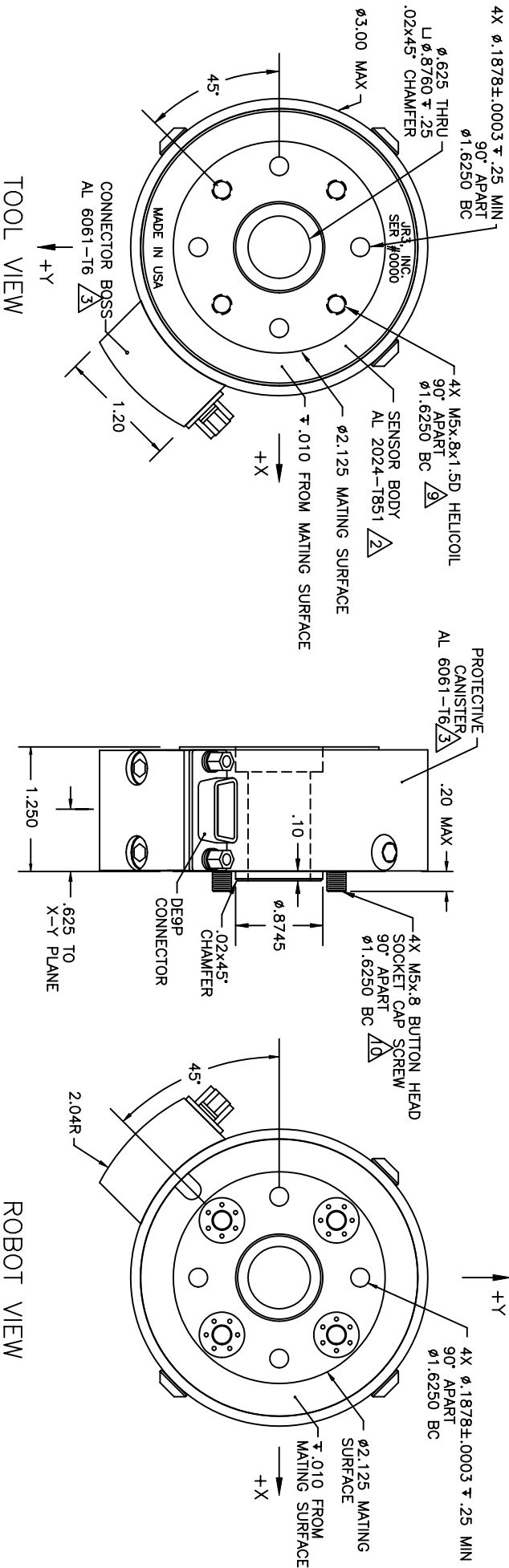


| REVOLUTIONS | | | |
|-------------|-----------------|----------|-----------|
| REV | DESCRIPTION | DATE | APPROVED |
| - | INITIAL RELEASE | 06/30/95 | G. SAKONA |
| A | SEE ECN E0363 | 12/07/95 | G. SAKONA |
| B | SEE ECN E0462 | 12/11/97 | G. SAKONA |
| C | SEE ECN E0739 | 11/29/02 | G. SAKONA |



NOTES:

- ALL DIMENSIONS ARE IN INCHES UNLESS OTHERWISE NOTED.
- TYPE 2, CLASS 2, BLACK ANODIZE.
- TYPE 2, CLASS 2, BLUE ANODIZE.
- AVAILABLE LOAD CAPACITIES INCLUDE: 15, 25, 50lb, WHERE:
 FULL SCALE Fx, Fy = LOAD RATING
 FULL SCALE Fz = LOAD RATING * 2
 FULL SCALE Mx, My, Mz = LOAD RATING * NOMINAL DIAMETER (3.0in)
- LENGTH OF CAPTIVE BOLT PROJECTION MAY BE ALTERED PER CUSTOMER REQUEST.
- ROBOT VIEW IS RIGHT HAND RULE (JRS STANDARD), THIS FORCES TOOL VIEW TO BE LEFT HAND RULE.
- AXES SHOWN ASSUME OPPOSITE SIDE HELD FIXED.
- TORQUE MOUNTING SCREWS TO 54inlb (6Nm) IN 18inlb (2Nm) STEPS, FOLLOWING AN A-C-B-D SEQUENCE.
- MAXIMUM ALLOWABLE SCREW PENETRATION INTO SENSOR TOOL SIDE IS .40in (10mm).
- SCREWS ARE CAPTIVE, FREE TO ROTATE, AND ACCESSIBLE WITH HEX KEY THRU SENSOR TOOL SIDE.

| | | | |
|---|-------------|-----------------------------|---------------|
| TITLE: | | MODEL: | |
| INTERFACE, 30E12 SENSOR, U562 BOLT PATTERN | | | |
| MAT'L: AS SHOWN | | DRAWN: GCS | |
| TOLEANCES: (UNLESS OTHERWISE NOTED) | | SCALE: 1/1 AND NOTED | |
| .XX=±.010in | X=±.25mm | DWG SIZE: B | |
| .XXX=±.005in | X=±.10mm | DWG NO.: 4838 | REV: C |
| .XXXX=±.001in | .XX=±.025mm | | |
| ANGLES = ±0.1 | | | |
| JRS, INC. WOODLAND, CA 95776 | | SHEET 1 OF 1 | |