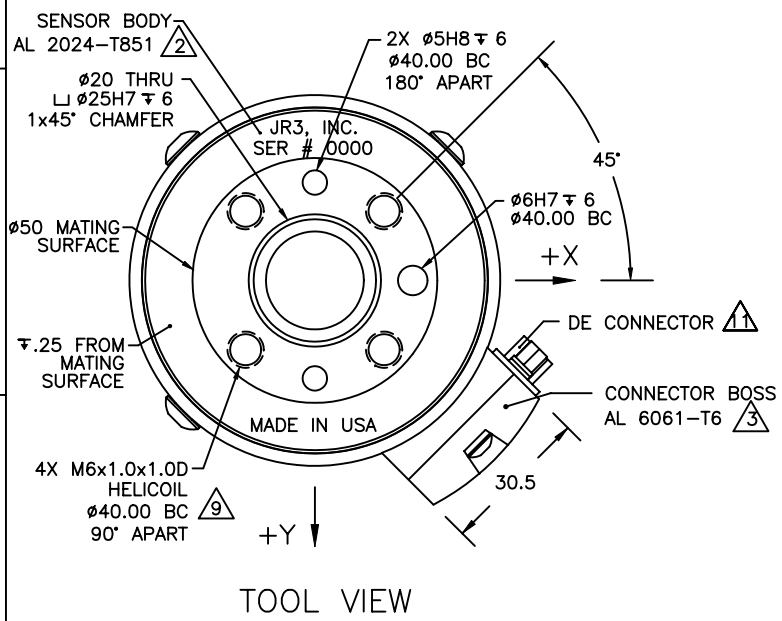
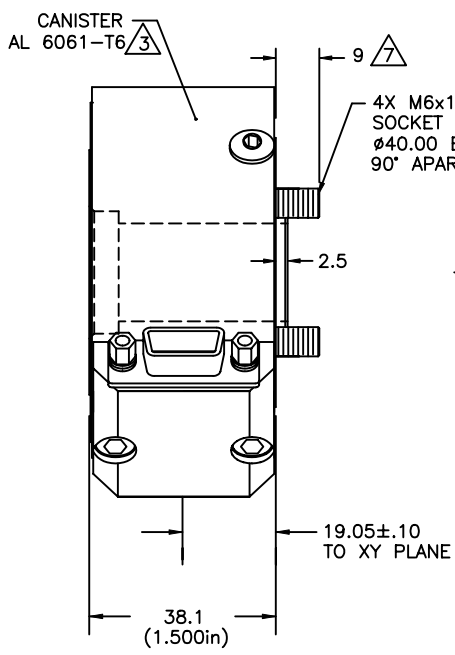


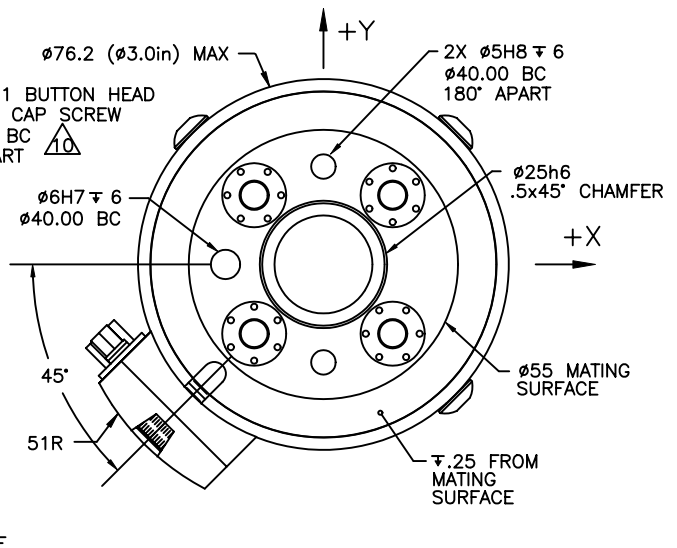
REVISIONS			
REV	DESCRIPTION	DATE	APPROVED
-	INITIAL RELEASE	06/10/93	G. SAKONA
A	SEE ECN E0240	06/24/98	G. SAKONA
B	SEE ECN E0706	01/17/02	G. SAKONA
C	SEE ECN E0822	12/30/05	G. SAKONA



TOOL VIEW



ROBOT VIEW



- NOTES:
- ALL DIMENSIONS ARE IN MILLIMETERS UNLESS OTHERWISE NOTED.
 - TYPE 2, CLASS 2, BLACK ANODIZE.
 - TYPE 2, CLASS 2, BLUE ANODIZE.
 - AVAILABLE SENSOR LOAD RATINGS INCLUDE: 15, 25, 50, 75 AND 100LB.
 WHERE: FULL SCALE F_x, F_y = LOAD RATING
 FULL SCALE F_z = LOAD RATING * 2
 FULL SCALE M_x, M_y, M_z = LOAD RATING * NOMINAL DIAMETER (3.0in)
 - AXES SHOWN ASSUME OPPOSITE HELD FIXED.
 - ROBOT VIEW IS RIGHT HAND RULE (JR3 STANDARD). THIS FORCES TOOL VIEW TO BE LEFT HAND RULE.
 - LENGTH OF CAPTIVE BOLT PROJECTION MAY BE ALTERED PER CUSTOMER REQUEST.
 - TORQUE MOUNTING SCREWS TO 10Nm (88inlb) IN 3 EQUAL STEPS, FOLLOWING AN A-C-B-D SEQUENCE.
 - MAXIMUM ALLOWABLE SCREW PENETRATION INTO SENSOR TOOL SIDE IS 14mm (.55in).
 - SCREWS ARE CAPTIVE, FREE TO ROTATE, AND ACCESSIBLE WITH HEX KEY THRU SENSOR TOOL SIDE.
 - CONNECTOR IS DE19P FOR EXTERNAL ELECTRONICS, DE9P FOR INTERNAL ANALOG ELECTRONICS.

TITLE:
INTERFACE, 30E15 SENSOR, 140 BOLT PATTERN

MAT'L: AS SHOWN	MODEL: 30E15A4-140-E 30E15A4-140-A	DRAWN: GCS
TOLERANCES: (UNLESS OTHERWISE NOTED) X = ±.25mm .XX = ±.010in .X = ±.10mm .XXX = ±.005in .XX = ±.025mm .XXXX = ±.001in ANGLES = ±0.1°		SCALE: 1/1 AND NOTED
JR3, INC. WOODLAND, CA 95776		DWG SIZE: B
		DWG NO: 4820 REV: C
SHEET 1 OF 1		

AUTHORIZED COPY