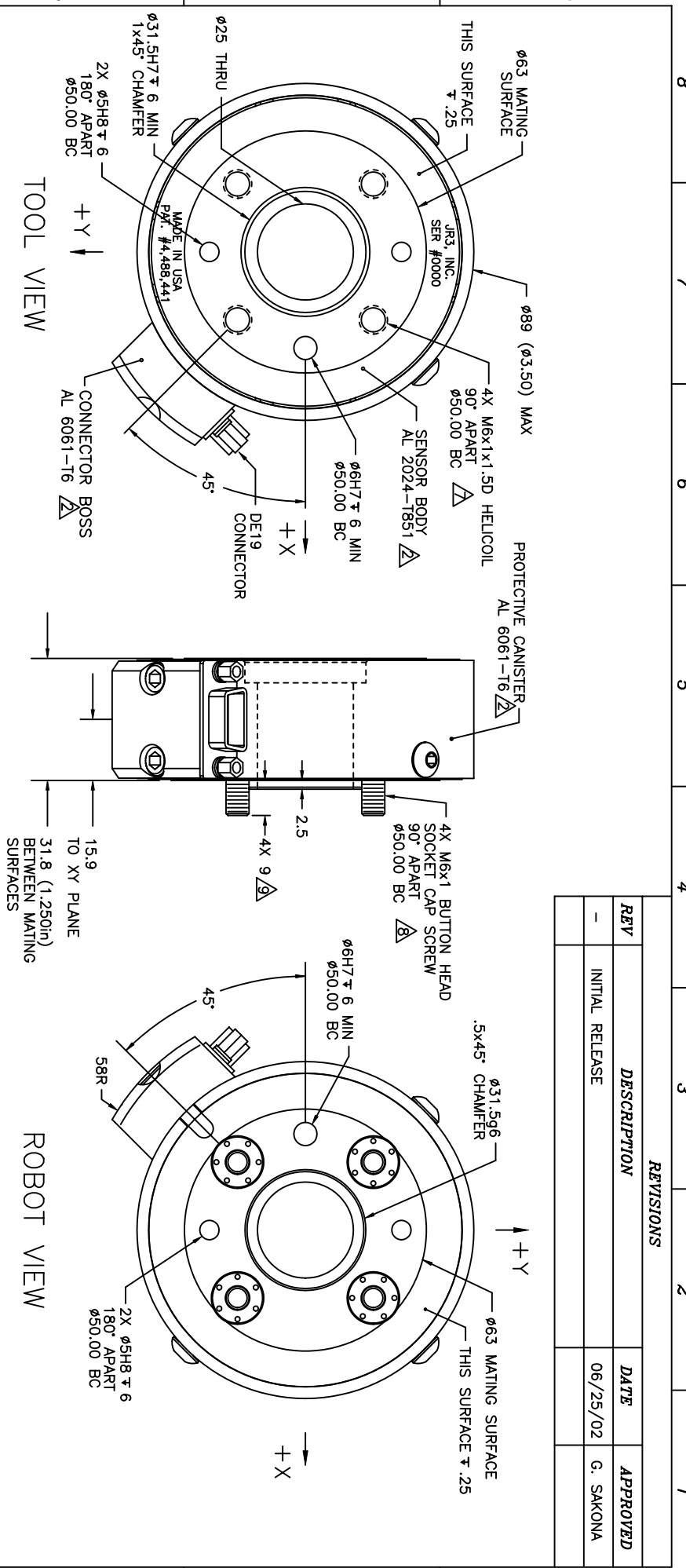


REVISIONS			
REV	DESCRIPTION	DATE	APPROVED
-	INITIAL RELEASE	06/25/02	G. SAKONA



NOTES:

- ALL DIMENSIONS ARE IN MILLIMETERS UNLESS OTHERWISE NOTED.
- TYPE 2, CLASS 2 ANDOZIE. BLACK FOR SENSOR BODY, BLUE FOR CANISTER AND BOSS.
- AVAILABLE LOAD RATINGS INCLUDE: 15, 25, AND 50LB, WHERE:
 - FULL SCALE Fx, Fy = LOAD RATING
 - FULL SCALE Fz = LOAD RATING * 2
 - FULL SCALE Mx, My, Mz = LOAD RATING * NOMINAL DIAMETER (3.5in).
- AXES SHOWN ASSUME OPPOSITE SIDE HELD FIXED.
- ROBOT VIEW IS RIGHT HAND RULE (JRS STANDARD). THIS FORCES TOOL VIEW TO BE LEFT HAND RULE.
- TORQUE MOUNTING SCREWS TO 10Nm (88inlb) IN 3 EQUAL STEPS, FOLLOWING AN A-C-B-D SEQUENCE. MAXIMUM ALLOWED BOLT PENETRATION INTO SENSOR TOOL SIDE IS 10mm (.40in).
- SCREWS ARE CAPTIVE, FREE TO ROTATE, AND ACCESSIBLE WITH HEX KEY THRU SENSOR TOOL SIDE.
- LENGTH OF SCREW PROJECTION MAY BE ALTERED PER CUSTOMER REQUEST.

TITLE: INTERFACE, 35E12 SENSOR, 150 BOLT PATTERN		MODEL: 35E12A-150	
MAT'L: AS SHOWN		SCALE: 1/1 AND NOTED	
TOLEANCES: (UNLESS OTHERWISE NOTED)		DWG SIZE: B	
X = ±.25mm	XX = ±.010in	DWG NO: 4895	
X = ±.10mm	XXX = ±.005in	REV: -	
XX = ±.025mm	XXXX = ±.001in	SHEET 1 OF 1	
ANGLES = ±0.1°			

JRS, INC. WOODLAND, CA 95776