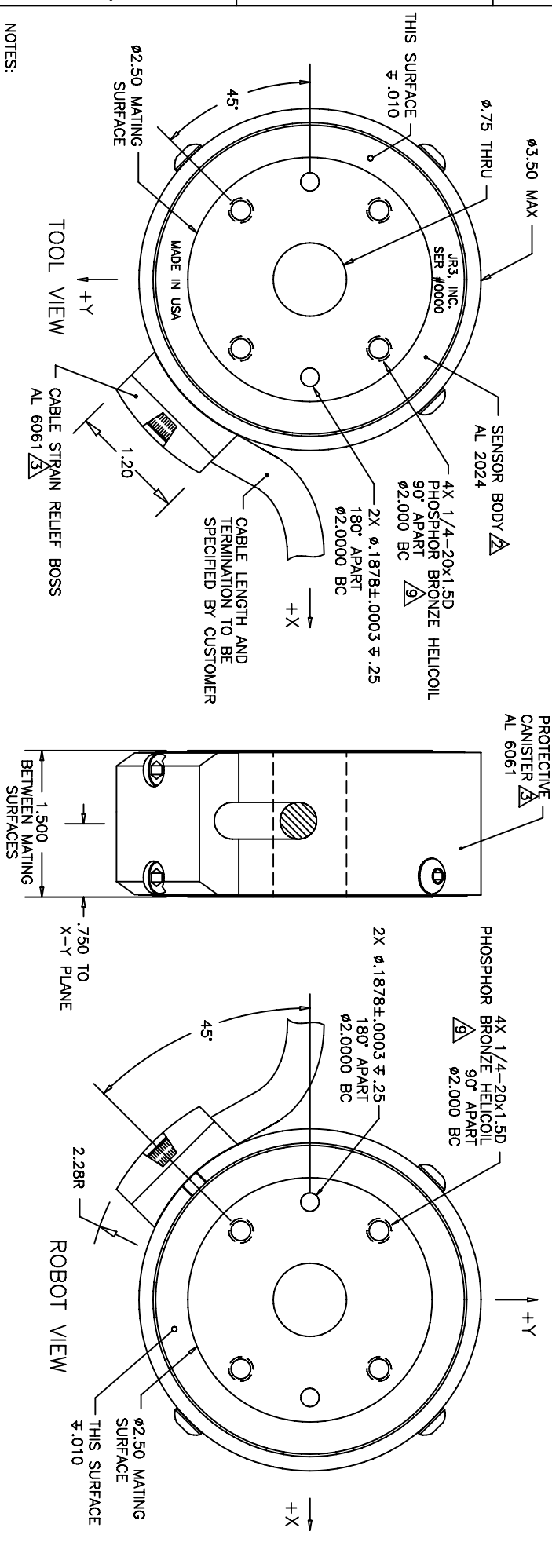


REVISIONS			
REV	DESCRIPTION	DATE	APPROVED
-	INITIAL RELEASE	06/17/04	G. SAKONA
A	SEE ECN E0899	12/26/08	G. SAKONA



NOTES:

1. ALL DIMENSIONS ARE IN INCHES UNLESS OTHERWISE NOTED.
2. TYPE 2, CLASS 2 BLUE ANODIZE.
3. TYPE 2, CLASS 2 BLUE ANODIZE.
4. STANDARD LOAD RATINGS INCLUDE: 25, 50, 75 AND 100lb, WHERE:
  - FULL SCALE F<sub>x</sub>, F<sub>y</sub> = SENSOR RATING
  - FULL SCALE F<sub>z</sub> = SENSOR RATING \* 2
  - FULL SCALE M<sub>x</sub>, M<sub>y</sub>, M<sub>z</sub> = SENSOR RATING \* NOMINAL DIAMETER (3.5in)
5. AXES SHOWN ASSUME OPPOSITE SIDE HELD FIXED.
6. ROBOT VIEW IS RIGHT HAND RULE (JR3 STANDARD). THIS FORCES TOOL VIEW TO BE LEFT HAND RULE.
7. TORQUE MOUNTING SCREWS TO 42in-lb IN 3 EQUAL STEPS, FOLLOWING AN A-C-B-D SEQUENCE. MAXIMUM ALLOWED PENETRATION OF MOUNTING SCREWS INTO SENSOR IS .50in.

**TITLE:** INTERFACE, 35E15 SENSOR, E20C, NON-MAGNETIC

<b>MAT'L:</b> AS SHOWN	<b>MODEL:</b>	<b>DRAWN:</b> G. SAKONA
<b>TOLERANCES:</b> (UNLESS OTHERWISE NOTED)		<b>SCALE:</b> 1/1 AND NOTED
XX = ±.010		<b>DWG SIZE:</b> B
XXX = ±.005		<b>DWG NO:</b> 4908
XXXX = ±.001		<b>REV:</b> A
ANGLES = 50.1°		

**JR3, INC. WOODLAND, CA 95776**

SHEET 1 OF 1