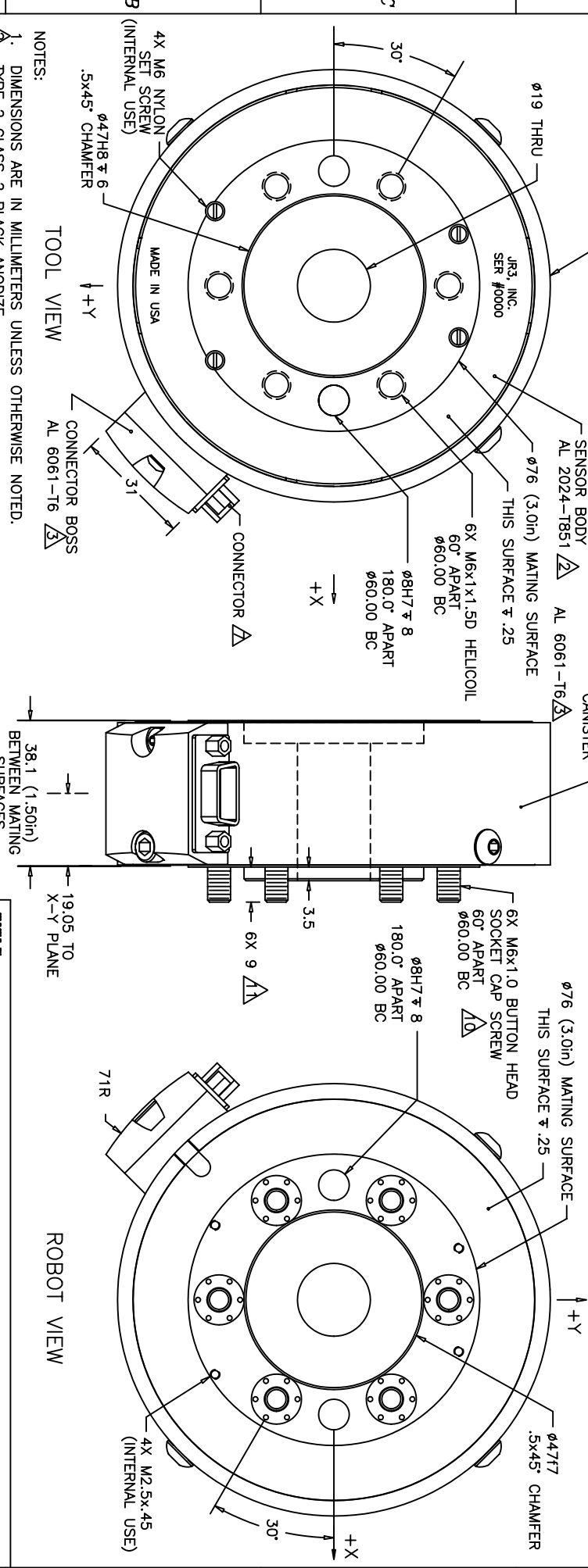


REVISIONS				
REV	DESCRIPTION	DATE	APPROVED	
-	INITIAL RELEASE	05/09/95	G. SAKONA	
A	SEE ECN E0374	02/19/96	G. SAKONA	
B	SEE ECN E0520	01/28/99	G. SAKONA	
C	SEE ECN E0639	04/27/00	G. SAKONA	



NOTES:

- DIMENSIONS ARE IN MILLIMETERS UNLESS OTHERWISE NOTED.
- TYPE 2 CLASS 2 BLACK ANODIZE.
- TYPE 2, CLASS 2, BLUE ANODIZE.
- AVAILABLE LOAD RATINGS INCLUDE:
  - FULL SCALE Fx, Fy = 50, 75, 100, 150 AND 250lb, WHERE:
  - FULL SCALE Fz = SENSOR RATING \* 2
  - FULL SCALE Mx, My, Mz = SENSOR RATING \* NOMINAL DIAMETER (4.5in)
- AXES SHOWN ASSUME OPPOSITE SIDE HELD FIXED.
- ROBOT VIEW IS RIGHT HAND RULE (JR3 STANDARD). THIS FORCES TOOL VIEW TO BE LEFT HAND RULE.
- CONNECTOR IS DE19 FOR SENSORS WITH EXTERNAL ELECTRONICS. DE9 WITH INTERNAL ANALOG ELECTRONICS.
- TORQUE MOUNTING SCREWS TO 88inlb (10nm) IN 3 EQUAL STEPS, FOLLOWING AN ACEBD\* SEQUENCE.
- MAXIMUM ALLOWED PENETRATION OF MOUNTING SCREWS INTO SENSOR TOOL SIDE IS 12mm (.50in).
- SCREWS ARE CAPTIVE, FREE TO ROTATE, AND ACCESSIBLE WITH HEX KEY THRU SENSOR TOOL SIDE.
- LENGTH OF CAPTIVE BOLT PROJECTION MAY BE ALTERED PER CUSTOMER REQUEST.

7717E: INTERFACE, 45E15 SENSOR, U760 BOLT PATTERN

MAT'L: AS SHOWN MODEL:

DEFAULT TOLERANCES:

LINEAR: X = ±.25mm  
 .X = ±.10mm  
 .XX = ±.025mm  
 ANGLAR: X = ±0.25  
 .X = ±0.10

DRAWN: GCS SCALE: 1/1 AND NOTED  
 DWG SIZE: B  
 DWG NO: 4822 REV: C  
 SHEET 1 OF 1