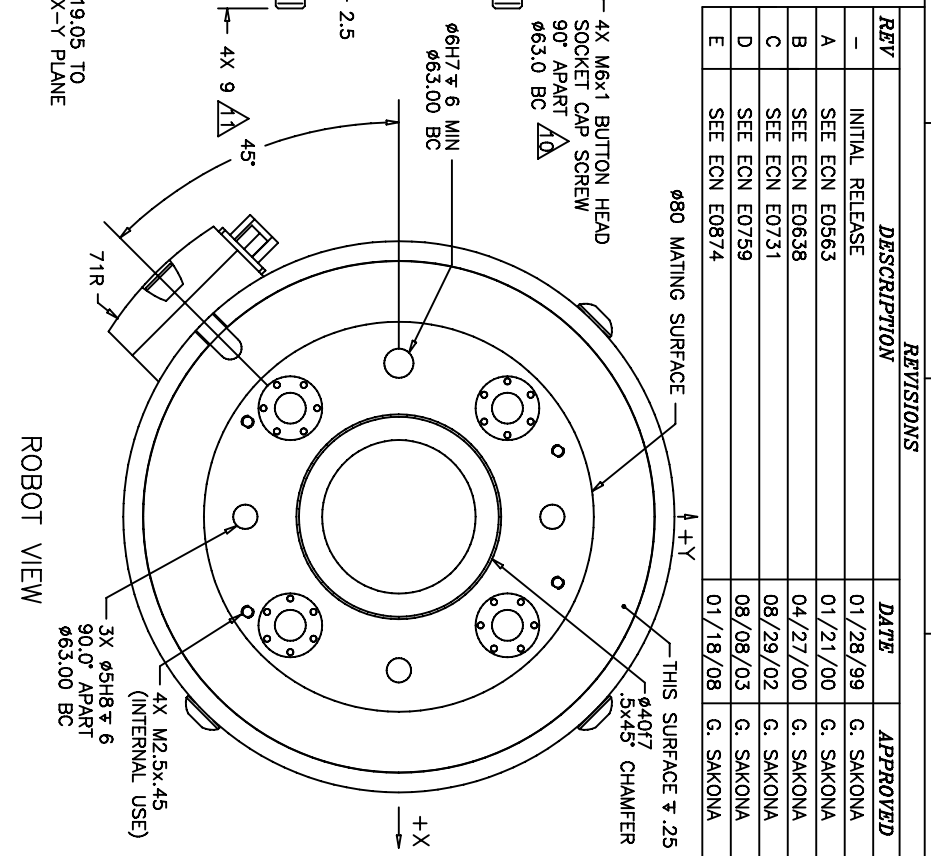
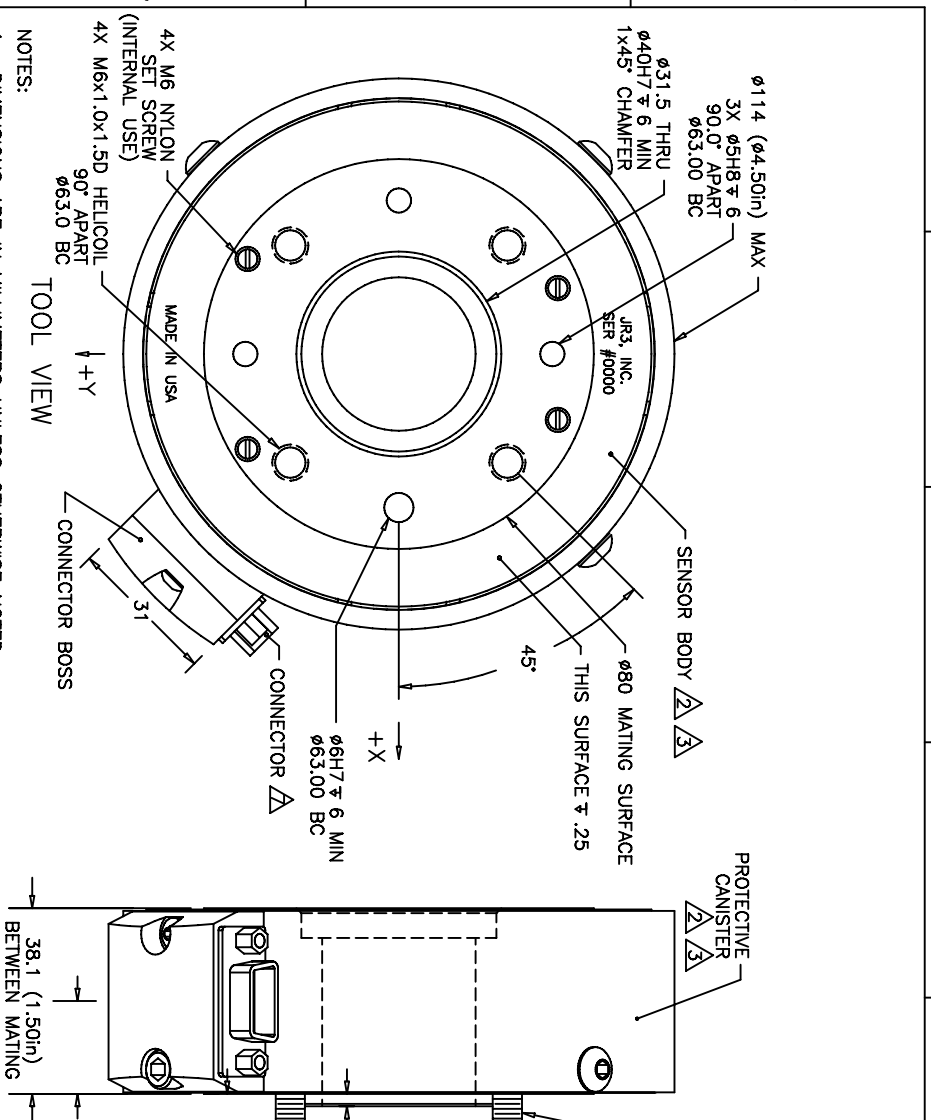


REVISIONS			DATE	APPROVED
REV	DESCRIPTION	DATE	APPROVED	
-	INITIAL RELEASE	01/28/99	G. SAKONA	
A	SEE ECN E0563	01/21/00	G. SAKONA	
B	SEE ECN E0638	04/27/00	G. SAKONA	
C	SEE ECN E0731	08/29/02	G. SAKONA	
D	SEE ECN E0759	08/08/03	G. SAKONA	
E	SEE ECN E0874	01/18/08	G. SAKONA	



NOTES:

1. DIMENSIONS ARE IN MILLIMETERS UNLESS OTHERWISE NOTED.
2. NOTED PARTS MAY BE ALUMINUM, STAINLESS STEEL, OR TITANIUM AS REQUIRED.
3. ALUMINUM PARTS ARE ANODIZED (TYPE 2, CLASS 2), STAINLESS STEEL PARTS ARE PASSIVATED.
4. AVAILABLE LOAD RATINGS INCLUDE: 200N, 400N, 630N AND 800N, WHERE:
  - FULL SCALE Fx, Fy = LOAD RATING
  - FULL SCALE Fz = LOAD RATING \* 2
  - FULL SCALE Mx, My, Mz = NOMINAL DIAMETER (.114M)
5. AXES SHOWN ASSUME OPPOSITE SIDE HELD FIXED.
6. ROBOT VIEW IS RIGHT HAND RULE (JRS STANDARD). THIS FORCES TOOL VIEW TO BE LEFT HAND RULE.
7. CONNECTOR IS DE19 FOR SENSORS WITH EXTERNAL ELECTRONICS, DE9 WITH INTERNAL ANALOG ELECTRONICS.
8. TORQUE MOUNTING SCREWS TO 10NM (88inlb) IN 3 EQUAL STEPS, FOLLOWING AN ACBD SEQUENCE.
9. MAXIMUM ALLOWED PENETRATION OF MOUNTING SCREWS INTO SENSOR IS 12mm (.50in).
10. SCREWS ARE CAPTIVE, RETRACTABLE, AND FREE TO ROTATE. TIGHTEN WITH HEX KEY THRU TOOL SIDE HOLES.
11. LENGTH OF CAPTIVE SCREW PROJECTION MAY BE ALTERED PER CUSTOMER REQUEST.

<b>7777E:</b>		<b>MODEL:</b>	
INTERFACE, 45E15 SENSOR, 163 BOLT PATTERN		GCS	
<b>MAT'L:</b> AS SHOWN		<b>SCALE:</b> 1/1 AND NOTED	
<b>DEFAULT TOLERANCES:</b>		<b>DWG SIZE:</b> B	
LINEAR:	X = ±.25mm	<b>DWG NO:</b> 4873	
	.X = ±.10mm	<b>REV:</b> E	
	.XX = ±.025mm		
ANGULAR:	X = ±0.10°		

AUTHORIZED COPY