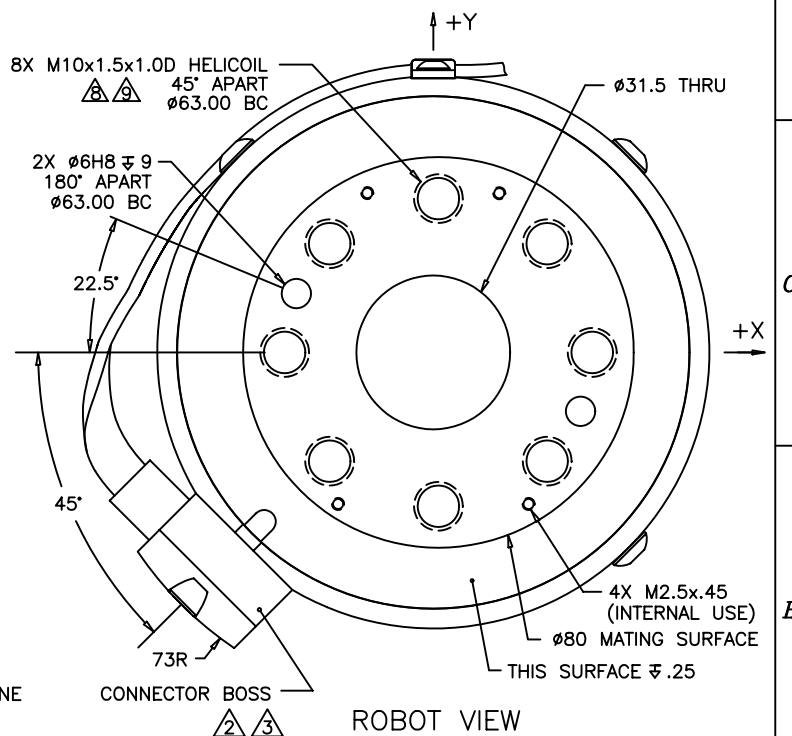
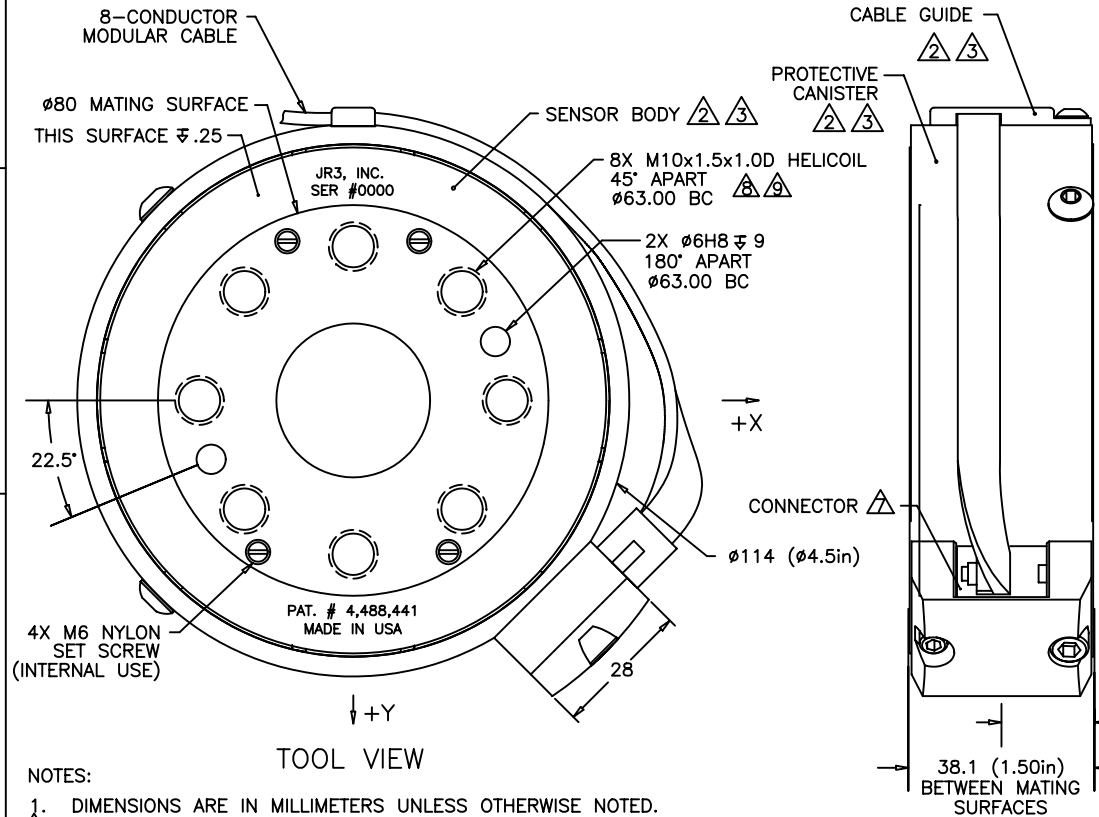


REVISIONS			
REV	DESCRIPTION	DATE	APPROVED
-	INITIAL RELEASE	02/16/07	G. SAKONA



- NOTES:
1. DIMENSIONS ARE IN MILLIMETERS UNLESS OTHERWISE NOTED.
 2. NOTED PARTS MAY BE ALUMINUM, STAINLESS STEEL, OR TITANIUM AS REQUIRED.
 3. ALUMINUM PARTS ARE ANODIZED (TYPE 2, CLASS 2), STAINLESS STEEL PARTS ARE PASSIVATED.
 4. AVAILABLE LOAD RATINGS RANGE FROM: 200N TO 2900N, WHERE:
 FULL SCALE F_x, F_y = SENSOR RATING
 FULL SCALE F_z = SENSOR RATING * 2
 FULL SCALE M_x, M_y, M_z = SENSOR RATING * NOMINAL DIAMETER (.114M)
 5. AXES SHOWN ASSUME OPPOSITE SIDE HELD FIXED.
 6. ROBOT VIEW IS RIGHT HAND RULE (JR3 STANDARD). THIS FORCES TOOL VIEW TO BE LEFT HAND RULE.
- △ CONNECTOR IS 8 PIN MODULAR FEMALE.
 △ TORQUE MOUNTING SCREWS TO 64Nm (570inlb) IN 3 EQUAL STEPS FOLLOWING AN ACEGBDFH SEQUENCE.
 △ MAXIMUM ALLOWED PENETRATION OF MOUNTING SCREWS INTO SENSOR IS 12mm (.50in).

TITLE:
INTERFACE, 45E15 SENSOR, M63A BOLT PATTERN, DIGITAL

MAT'L: AS SHOWN	MODEL:	DRAWN: GCS
DEFAULT TOLERANCES:		SCALE: 1/1 AND NOTED
LINEAR: X = ±.25mm .X = ±.10mm .XX = ±.025mm		DWG SIZE: B
ANGULAR: X = ±0.25° .X = ±0.10°		DWG NO: 4951
JR3, INC. WOODLAND, CA 95776		REV: -
		SHEET 1 OF 1

AUTHORIZED COPY