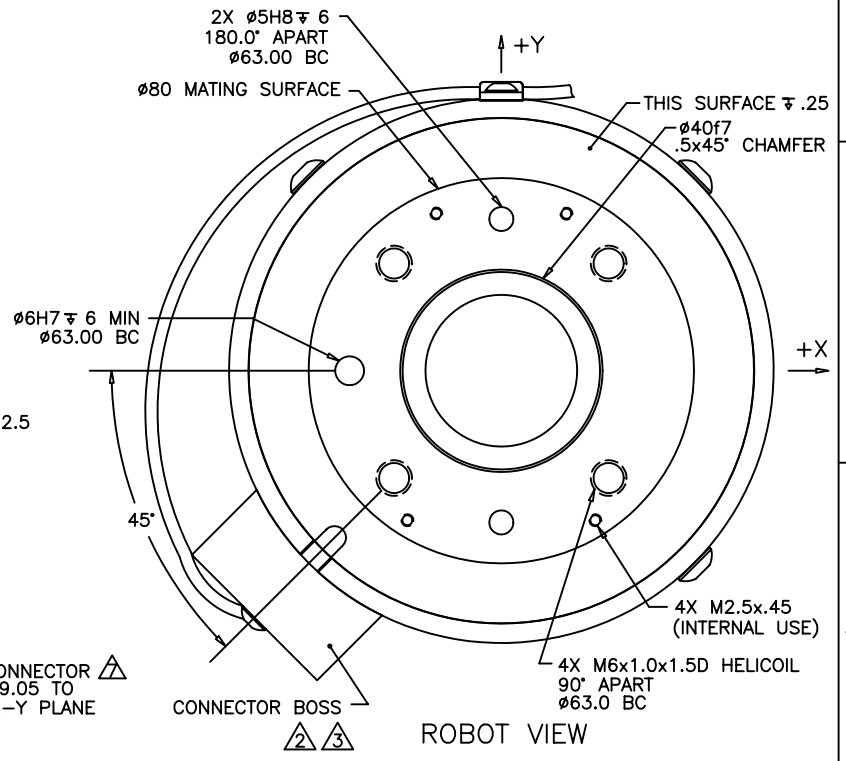
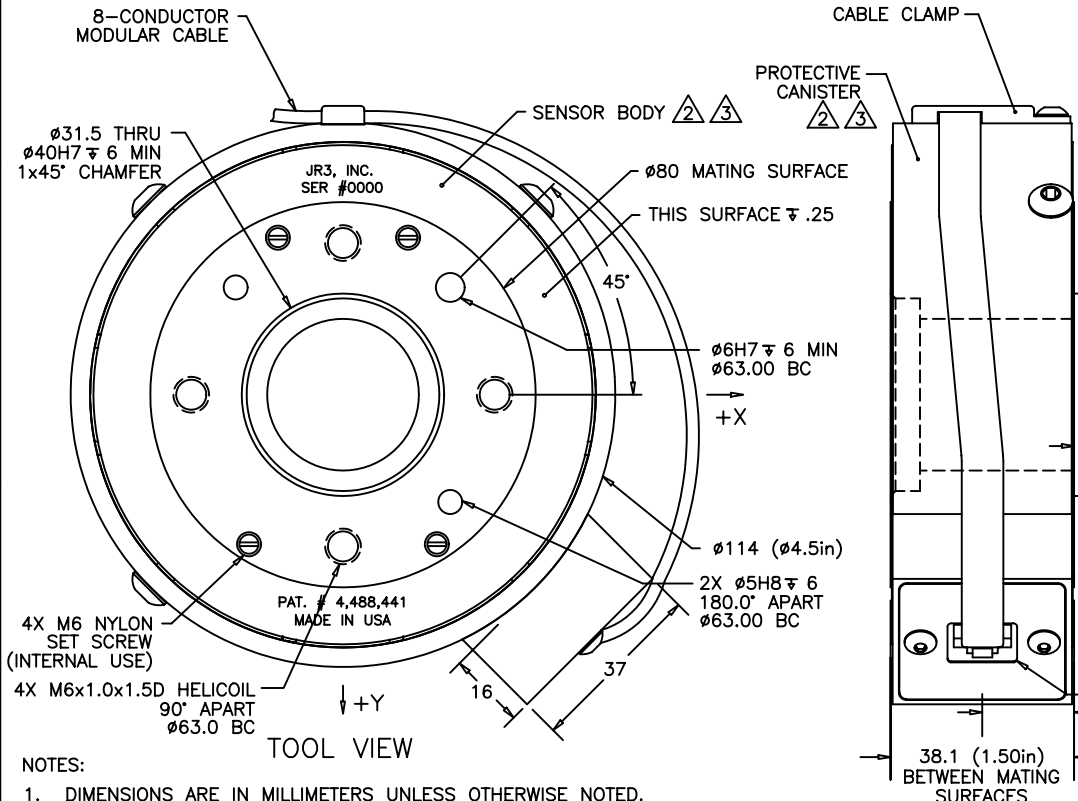


REVISIONS			
REV	DESCRIPTION	DATE	APPROVED
-	INITIAL RELEASE	03/09/04	G. SAKONA
A	SEE ECN E0784	03/25/04	G. SAKONA



- NOTES:
- DIMENSIONS ARE IN MILLIMETERS UNLESS OTHERWISE NOTED.
 - NOTED PARTS MAY BE ALUMINUM, STAINLESS STEEL, OR TITANIUM AS REQUIRED.
 - ALUMINUM PARTS ARE ANODIZED (TYPE 2, CLASS 2), STAINLESS STEEL PARTS ARE ELECTROPOLISHED.
 - AVAILABLE LOAD RATINGS INCLUDE: 50, 75, 100, 150 AND 250lb, WHERE:
 FULL SCALE F_x, F_y = SENSOR RATING
 FULL SCALE F_z = SENSOR RATING * 2
 FULL SCALE M_x, M_y, M_z = SENSOR RATING * NOMINAL DIAMETER (4.5in)
 - AXES SHOWN ASSUME OPPOSITE SIDE HELD FIXED.
 - ROBOT VIEW IS RIGHT HAND RULE (JR3 STANDARD). THIS FORCES TOOL VIEW TO BE LEFT HAND RULE.
 - CONNECTOR IS 8 PIN MODULAR FEMALE.
 - TORQUE MOUNTING SCREWS TO 13Nm (120inlb) IN 3 EQUAL STEPS, FOLLOWING AN ACBD SEQUENCE.
 - MAXIMUM ALLOWED PENETRATION OF MOUNTING SCREWS INTO SENSOR IS 12mm (.50in).

TITLE: INTERFACE, 45E15 SENSOR, M63D BOLT PATTERN, DIGITAL		
MAT'L: AS SHOWN	MODEL:	DRAWN: GCS
DEFAULT TOLERANCES:		SCALE: 1/1 AND NOTED
LINEAR:	X = ±.25mm .X = ±.10mm .XX = ±.025mm	DWG SIZE: B
ANGULAR:	X = ±0.25° .X = ±0.10°	DWG NO: 4906
JR3, INC. WOODLAND, CA 95776		REV: A
		SHEET 1 OF 1

AUTHORIZED COPY