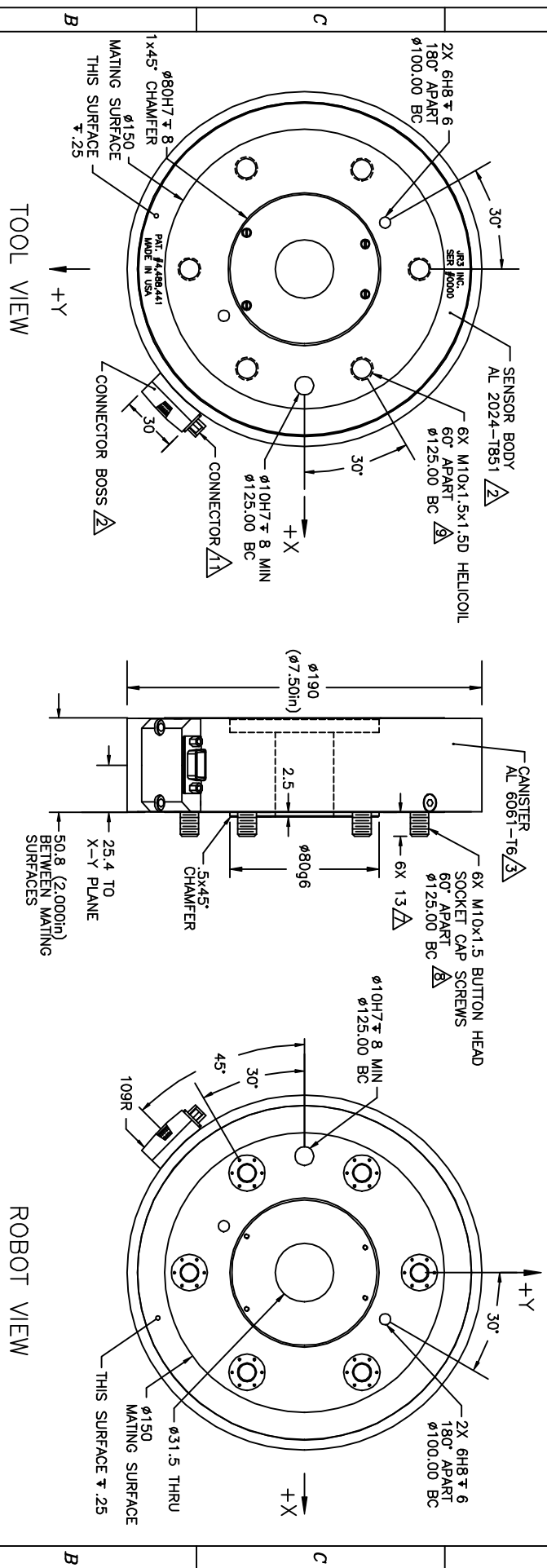


| REVIEWS | | | |
|---------|---|----------|-----------|
| REV | DESCRIPTION | DATE | APPROVED |
| A | SEE EGN E0446 -- PREVIOUSLY RELEASED AS 90071 | 09/16/97 | G. SAKOMA |
| B | SEE EGN E0635 | 04/21/00 | G. SAKOMA |



- NOTES:
1. ALL DIMENSIONS ARE IN MILLIMETERS UNLESS OTHERWISE NOTED.
 2. TYPE 2, CLASS 2, BLACK ANODIZE.
 3. TYPE 2, CLASS 2, BLUE ANODIZE.
 4. AVAILABLE SENSOR LOAD RATINGS INCLUDE: 100, 150, 250, 400 AND 500lb.
- WHERE:
- FULL SCALE Fx, Fy = SENSOR RATING * 2
 - FULL SCALE Fz = SENSOR RATING * 2
 - FULL SCALE Mx, My, Mz = SENSOR RATING * NOMINAL DIAMETER (7.5in)

5. AXES SHOWN ASSUME OPPOSITE SIDE HELD FIXED.
 6. ROBOT VIEW IS RIGHT HAND RULE (JR3 STANDARD). THIS FORCES TOOL VIEW TO BE LEFT HAND RULE.
 7. LENGTH OF CAPTIVE SCREW PROJECTION MAY BE ALTERED PER CUSTOMER REQUEST.
 8. SCREWS ARE CAPTIVE, FREE TO ROTATE, AND ACCESSIBLE WITH HEX KEY THRU SENSOR TOOL PLATE.
 9. MAXIMUM ALLOWED SCREW PENETRATION INTO SENSOR TOOL PLATE IS 20mm (.80in).
 10. TORQUE SCREWS TO 48Nm (420mIn) IN 3 EQUAL STEPS, FOLLOWING AN A-C-E-B-D-F SEQUENCE.
- CONNECTOR IS DE19 FOR SENSORS WITH EXTERNAL ELECTRONICS, DE9 WITH INTERNAL ANALOG ELECTRONICS.

TITLE:
INTERFACE, 75E20 SENSOR, 1125 BOLT PATTERN

MAT'L: AS SHOWN

MODEL: 75E20A-1125-8
75E20A-1125-A

TOLERANCES:
(UNLESS OTHERWISE NOTED)

X = ±.25mm
X = ±.10mm
.XX = ±.025mm
ANGLES = ±0.1°

DRAWN: GCS

SCALE: 1/1 AND NOTED

DWG SIZE: B

DWG NO.: 4817

REV.: B

JR3, INC. WOODLAND, CA 95776

SHEET 1 OF 1