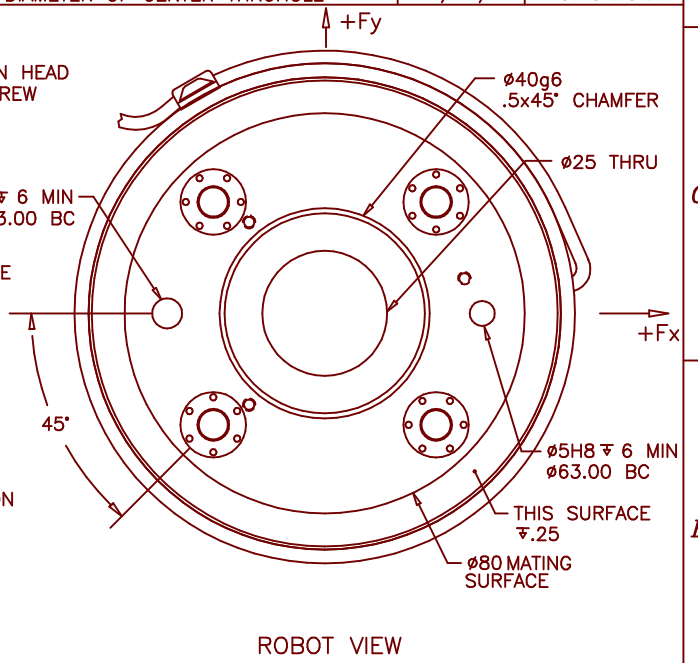
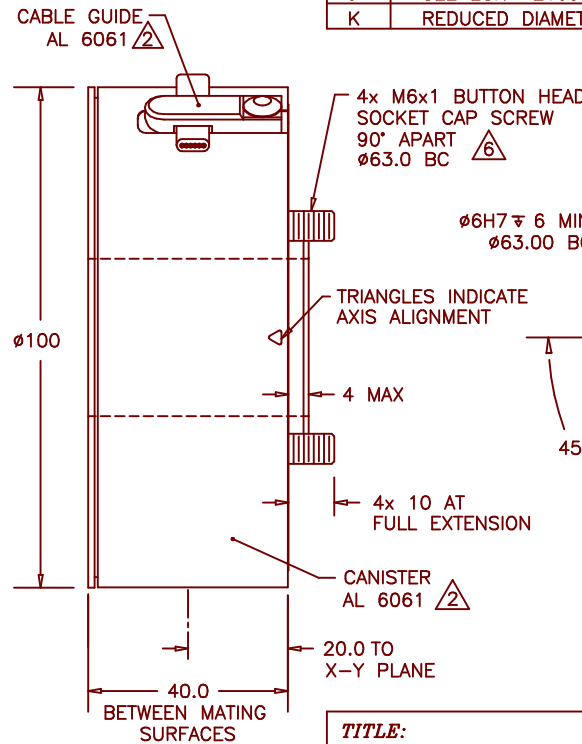
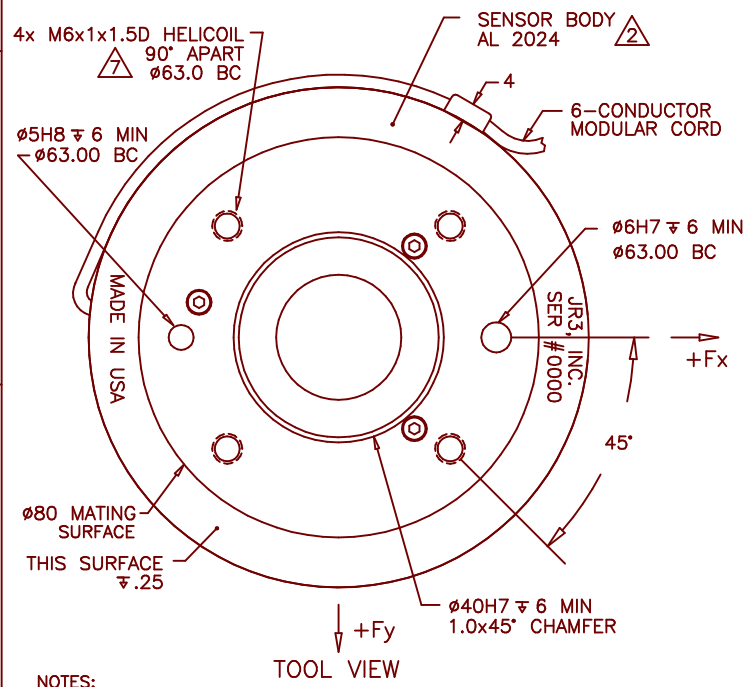


REVISIONS			
REV	DESCRIPTION	DATE	APPROVED
-	INITIAL RELEASE	07/28/93	G. SAKONA
A-E	SEE ECN E0116, E0136, E0222, E0302, E0490	07/22/98	G. SAKONA
F	SEE ECN E0552	08/27/99	G. SAKONA
G	SEE ECN E0681	07/31/01	G. SAKONA
H	SEE ECN E0801	02/28/05	G. SAKONA
I	SEE ECN E1009	10/07/11	G. SAKONA
J	SEE ECN E1093	09/10/14	G. SAKONA
K	REDUCED DIAMETER OF CENTER THRUHOLE	01/09/15	G. SAKONA



- NOTES:
- DIMENSIONS ARE IN MILLIMETERS UNLESS OTHERWISE NOTED.
 - ANODIZED, TYPE 2, CLASS 2; BLACK FOR SENSOR BODY, BLUE FOR CANISTER.
 - AVAILABLE LOAD RATINGS INCLUDE: 25, 50, 100lb (100, 200, 400N)
WHERE MECHANICAL FULL SCALES (mFS) FOR EACH AXIS ARE:
mFS Fx,y = SENSOR LOAD RATING
mFS Fz = SENSOR LOAD RATING * 2
mFS Mx, My, Mz = SENSOR LOAD RATING * NOMINAL SENSOR DIAMETER (4.0in, 100mm)
 - ELECTRICAL FULL SCALES (eFS) CAN BE FACTORY PRE-SET BETWEEN 25% AND 150% OF mFS.
 - Fx AND Fy OUTPUTS SHOWN ASSUME OPPOSITE FACE IS HELD FIXED.
Fz OUTPUT IS ALWAYS POSITIVE FOR TENSION.
Mx, My, Mz OUTPUTS ALWAYS FOLLOW RIGHT HAND RULE.
 - NOTED SCREWS ARE CAPTIVE, RETRACTABLE AND FREE TO ROTATE. TIGHTEN WITH HEX KEY THRU SENSOR TOOLSIDE HOLES. TORQUE TO 10Nm (88inlb) IN 3 STEPS - SNUG, HALF TORQUE, FULL TORQUE, FOLLOWING AN A-C-E-B-D-F SEQUENCE.
 - MAXIMUM ALLOWED SCREW PENETRATION INTO SENSOR TOOL SIDE IS 15mm (.60in).

TITLE: INTERFACE, 100M40 SENSOR, I63 BOLT PATTERN

MAT'L: AS SHOWN	MODEL:	DRAWN: GCS	
TOLERANCES: (UNLESS OTHERWISE NOTED) X = ±.25mm .X = ±.10mm .XX = ±.025mm ANGLES = ±0.1°		SCALE: 1/1 AND NOTED	
		DWG SIZE: B	
JR3, INC. WOODLAND, CA 95776		DWG NO:	REV:
		3813	K
		SHEET 1 OF 1	