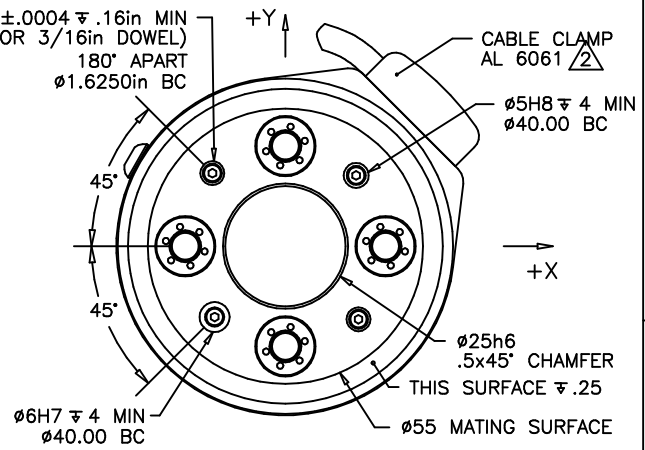
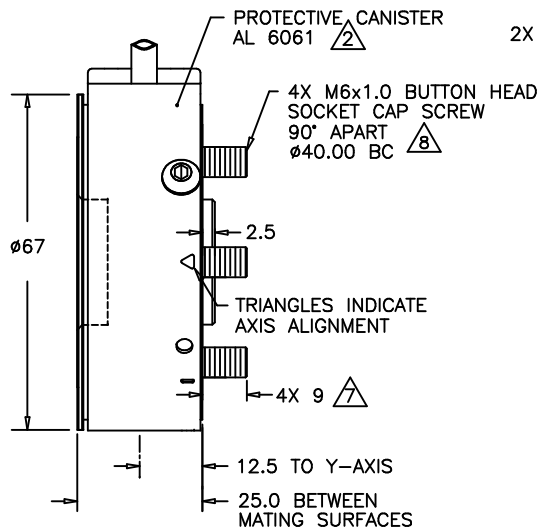
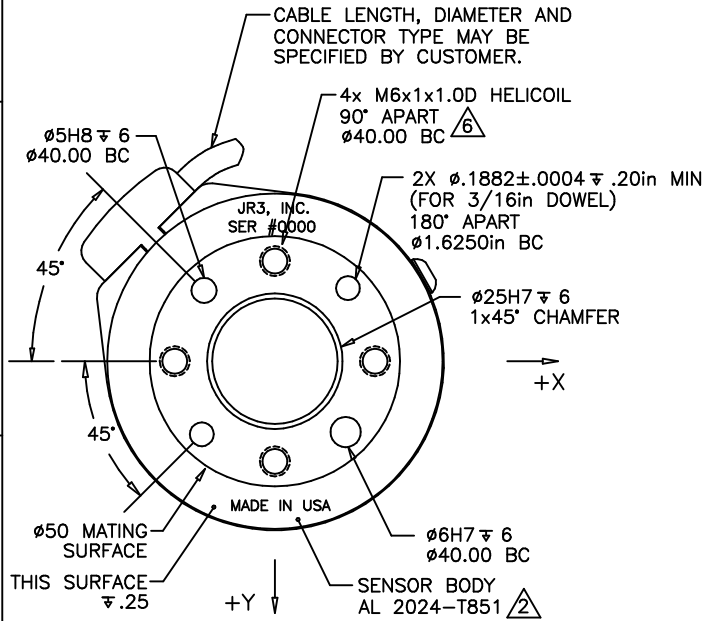


REVISIONS			
REV	DESCRIPTION	DATE	APPROVED
-	INITIAL RELEASE	07/08/04	G. SAKONA
A	SEE ECN E0797	12/13/04	G. SAKONA
B	SEE ECN E0807	06/23/05	G. SAKONA
C	SEE ECN E0952	10/15/10	G. SAKONA
D	SEE ECN E0986	07/21/11	G. SAKONA
E	REDUCED DOWEL HOLE DEPTHS, ROBOT VIEW	11/15/12	G. SAKONA



TOOL VIEW

ROBOT VIEW

- NOTES:
- DIMENSIONS ARE IN MILLIMETERS UNLESS OTHERWISE NOTED.
 - TYPE 2, CLASS 2, ANODIZE. BLACK FOR SENSOR BODY, BLUE FOR CANISTER AND CABLE CLAMP.
 - AVAILABLE SENSOR LOAD RATINGS INCLUDE: 25 AND 50lb (100 AND 200N), WHERE MECHANICAL FULL SCALES (mFS) FOR EACH AXIS ARE AS FOLLOWS:
 mFS Fx & Fy = SENSOR LOAD RATING
 mFS Fz = SENSOR LOAD RATING * 2
 mFS Mx, My, Mz = SENSOR LOAD RATING * SENSOR DIAMETER (2.6in OR .066m)
 - ELECTRICAL FULL SCALES (eFS) CAN BE FACTORY PRE-SET BETWEEN 25% AND 100% OF mFS.
 - AXES SHOWN ASSUME OPPOSITE SIDE HELD FIXED. TENSION GIVES +Fz IN BOTH VIEWS. ROBOT VIEW IS RIGHT HAND RULE.
 - MAXIMUM ALLOWED PENETRATION OF MOUNTING SCREWS INTO SENSOR TOOL SIDE IS 8mm (.32in). LENGTH OF CAPTIVE SCREW PROJECTION MAY BE ALTERED PER CUSTOMER REQUEST.
 - NOTED SCREWS ARE CAPTIVE, RETRACTABLE AND FREE TO ROTATE. TIGHTEN WITH TORQUE WRENCH AND HEX KEY INSERTED THROUGH TAPPED HOLES IN SENSOR TOOL SIDE.
 - TORQUE ALL MOUNTING SCREWS TO 10Nm (88in-lb) IN 3 STEPS: SNUG, HALF AND FULL TORQUE, FOLLOWING AN A-C-B-D SEQUENCE.

TITLE:
INTERFACE, 67M25 SENSOR, I40, ANALOG, DIRECT CABLE CONNECTION

MAT'L: AS SHOWN	MODEL:	DRAWN: GCS
TOLERANCES: (UNLESS OTHERWISE NOTED) X = ±.25mm X = ±.10mm .XX = ±.025mm ANGLES = ±0.1°		SCALE: 1/1 AND NOTED
		DWG SIZE: B
		DWG NO: 3861
		REV: E
SHEET 1 OF 1		

JR3, INC. WOODLAND, CA 95776

8 7 6 5 4 3 2 1

8 7 6 5 4 3 2 1