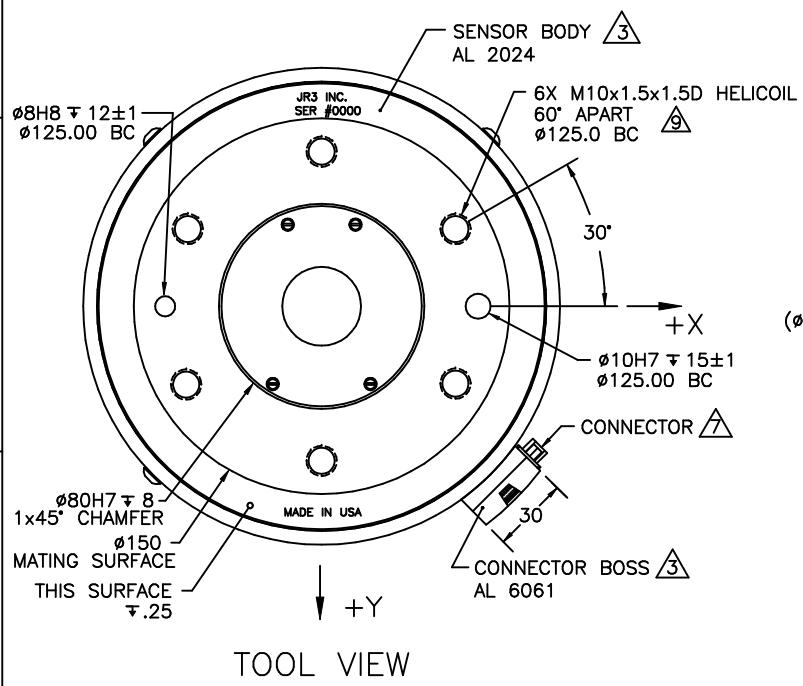
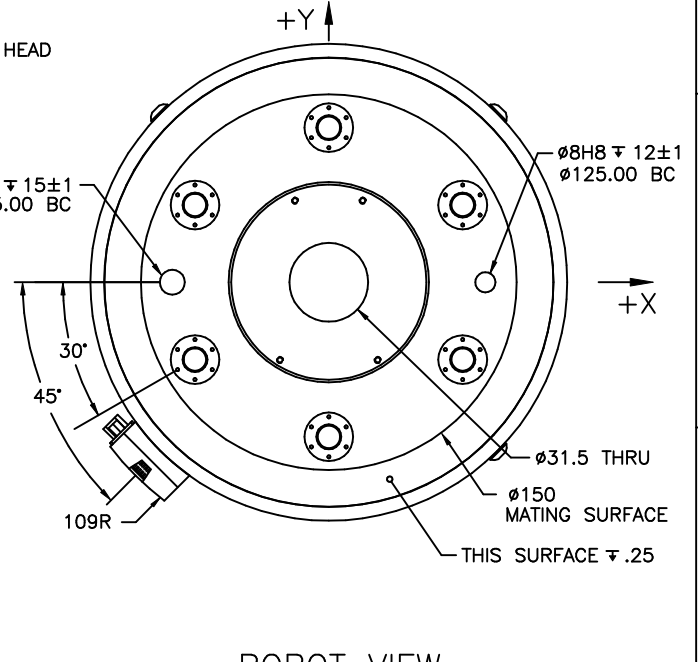
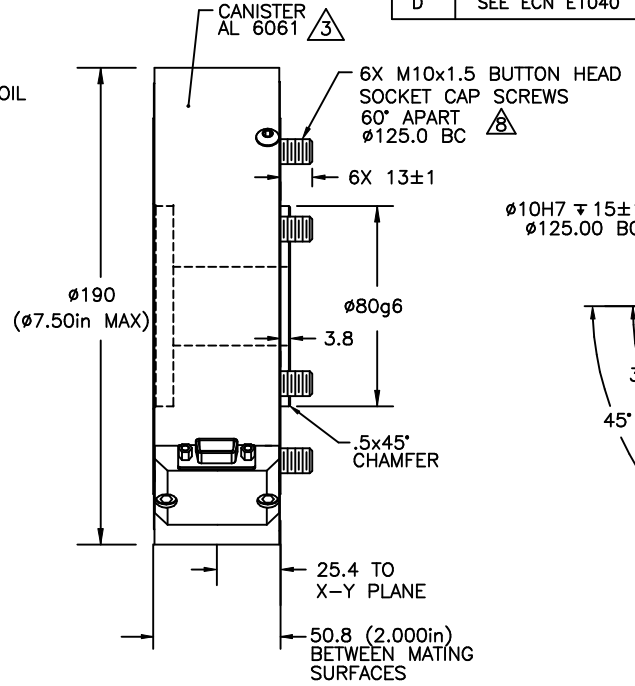


REVISIONS			
REV	DESCRIPTION	DATE	APPROVED
A	SEE ECN E0446 -- PREVIOUSLY RELEASED AS 90071	09/16/97	G. SAKONA
B	SEE ECN E0635	04/21/00	G. SAKONA
C	SEE ECN E0894	10/30/08	G. SAKONA
D	SEE ECN E1040	03/30/12	G. SAKONA



TOOL VIEW



ROBOT VIEW

- NOTES:
- ALL DIMENSIONS ARE IN MILLIMETERS UNLESS OTHERWISE NOTED.
 - THIS NOTE HAS BEEN REMOVED.
 - ALUMINUM PARTS ARE ANODIZED, TYPE 2, CLASS 2.
 - AVAILABLE STANDARD SENSOR LOAD RATINGS INCLUDE: 400, 1000 AND 2000N (100, 250 AND 500lb) WHERE MECHANICAL FULL SCALES (mFS) FOR EACH AXIS ARE AS FOLLOWS:
mFS Fx & Fy = SENSOR LOAD RATING
mFS Fz = SENSOR LOAD RATING * 2
mFS Mx, My, Mz = SENSOR LOAD RATING * NOMINAL DIAMETER
 - ELECTRICAL FULL SCALES (eFS) CAN BE FACTORY PRE-SET BETWEEN 25% AND 100% OF mFS.
 - AXES SHOWN ASSUME OPPOSITE SIDE HELD FIXED. TENSION GIVES +Fz IN BOTH VIEWS. ROBOT VIEW IS RIGHT HAND RULE.
 - CONNECTOR IS DE19 FOR SENSORS WITH EXTERNAL ELECTRONICS, DE9 WITH INTERNAL ANALOG ELECTRONICS.
 - SCREWS ARE CAPTIVE, RETRACTABLE AND FREE TO ROTATE. TIGHTEN WITH HEX KEY THRU TOOL SIDE PLATE.
 - MAXIMUM ALLOWED PENETRATION OF MOUNTING SCREWS INTO SENSOR TOOL SIDE IS 20mm (.80in).
 - TORQUE SCREWS TO 48Nm (420inlb). TIGHTEN IN 3 STEPS: SNUG, HALF, FULL TORQUE, FOLLOWING AN A-C-E-B-D-F SEQUENCE.

TITLE:
INTERFACE, 75E20 SENSOR, I125 BOLT PATTERN

MAT'L: AS SHOWN	MODEL:	DRAWN: GCS
TOLERANCES: (UNLESS OTHERWISE NOTED) X = ±.25mm .X = ±.10mm .XX = ±.025mm ANGLES = ±0.1°		SCALE: 1/2 AND NOTED
		DWG SIZE: B
		DWG NO: 4817
		REV: D
SHEET 1 OF 1		

JR3, INC. WOODLAND, CA 95776