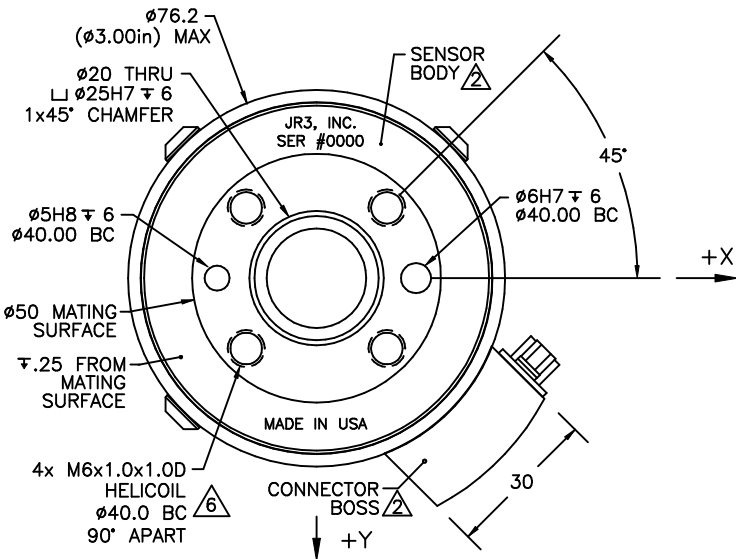
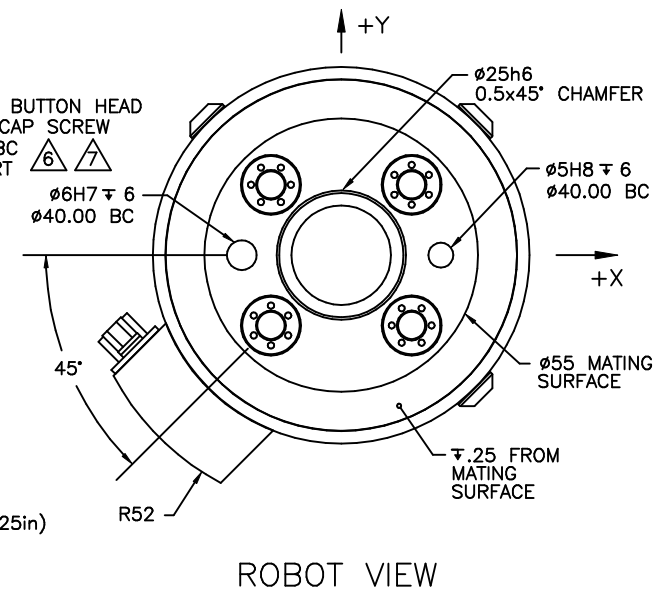
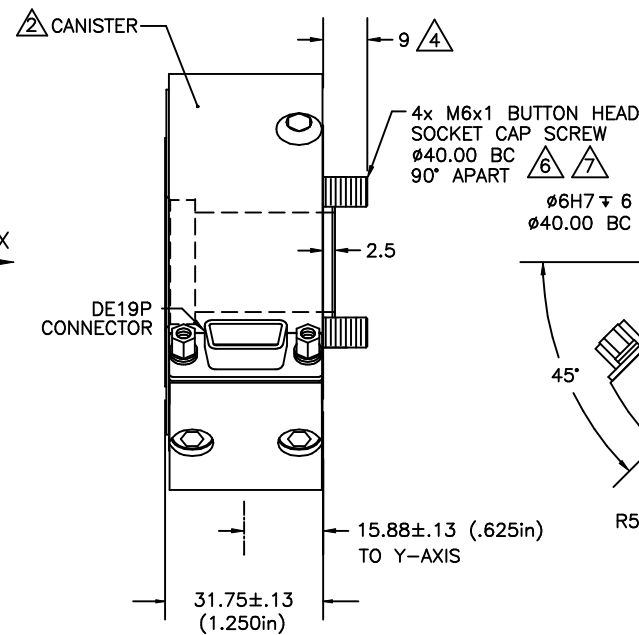


REVISIONS			
REV	DESCRIPTION	DATE	APPROVED
-	INITIAL RELEASE	06/30/95	G. SAKONA
A,B	SEE ECN E0363, E0448	12/07/95, 09/16/97	G. SAKONA
C,D	SEE ECN E0464, E0543	12/16/97, 06/29/99	G. SAKONA
E,F	SEE ECN E0792, E0853	10/04/04, 03/19/07	G. SAKONA
G,H	SEE ECN E0973, E1070	03/31/11, 01/28/13	G. SAKONA



TOOL VIEW



ROBOT VIEW

- NOTES:
- ALL DIMENSIONS ARE IN MILLIMETERS UNLESS OTHERWISE NOTED.
 - NOTED PARTS MAY BE ALUMINUM, STAINLESS STEEL, OR TITANIUM.
 - ALUMINUM PARTS ARE ANODIZED (TYPE 2, CLASS 2). STAINLESS STEEL PARTS ARE PASSIVATED.
 - LENGTH OF CAPTIVE SCREW PROJECTION MAY BE ALTERED PER CUSTOMER REQUEST.
 - AXES SHOWN ASSUME OPPOSITE SIDE HELD FIXED. ROBOT VIEW IS RIGHT HAND RULE. TENSION GIVES +Fz IN BOTH VIEWS.
 - TORQUE ALL MOUNTING SCREWS TO 10Nm (88 in-lb) IN 3 STEPS: SNUG, HALF AND FULL TORQUE, FOLLOWING AN A-C-B-D SEQUENCE. FOR 10LB-RATED SENSORS TORQUE TO 6Nm.
 - NOTED SCREWS ARE CAPTIVE, FREE TO ROTATE AND RETRACTABLE INTO SENSOR. TIGHTEN WITH ALLEN WRENCH (HEX KEY) THROUGH MOUNTING SCREWHOLES IN TOOL SIDE.
 - MAXIMUM ALLOWABLE SCREW PENETRATION INTO SENSOR TOOL SIDE IS 15mm (.60in).

TITLE:
INTERFACE, 30E12 SENSOR, 140 BOLT PATTERN

MAT'L: AS SHOWN	MODEL:	DRAWN: GCS
TOLERANCES: (UNLESS OTHERWISE NOTED) .XX=±.010in X=±.25mm .XXX=±.005in .X=±.10mm .XXXX=±.001in .XX=±.025mm ANGLES = ±0.1°		SCALE: 1/1 AND NOTED
		DWG SIZE: B
		DWG NO: 4841
		REV: H
JR3, INC. WOODLAND, CA 95776		SHEET 1 OF 1