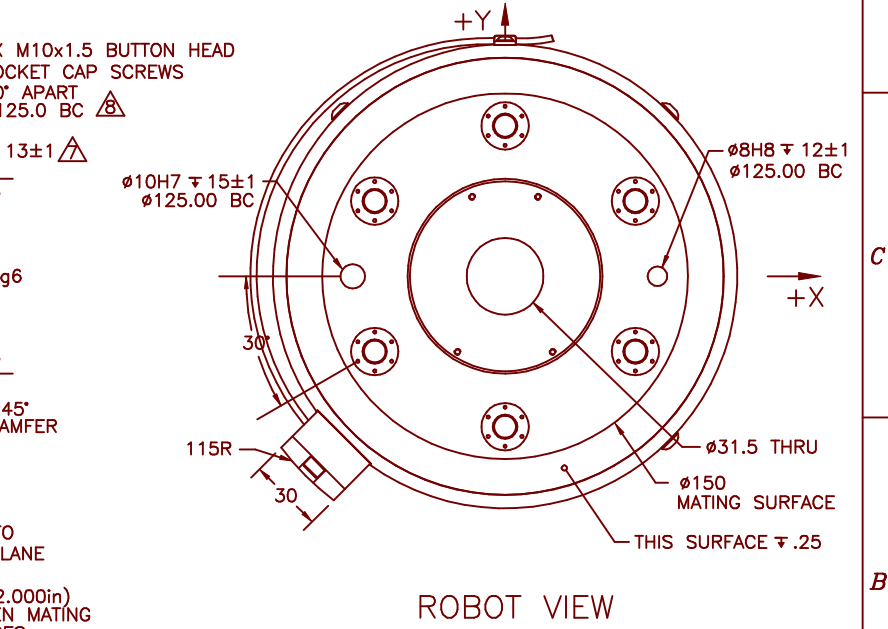
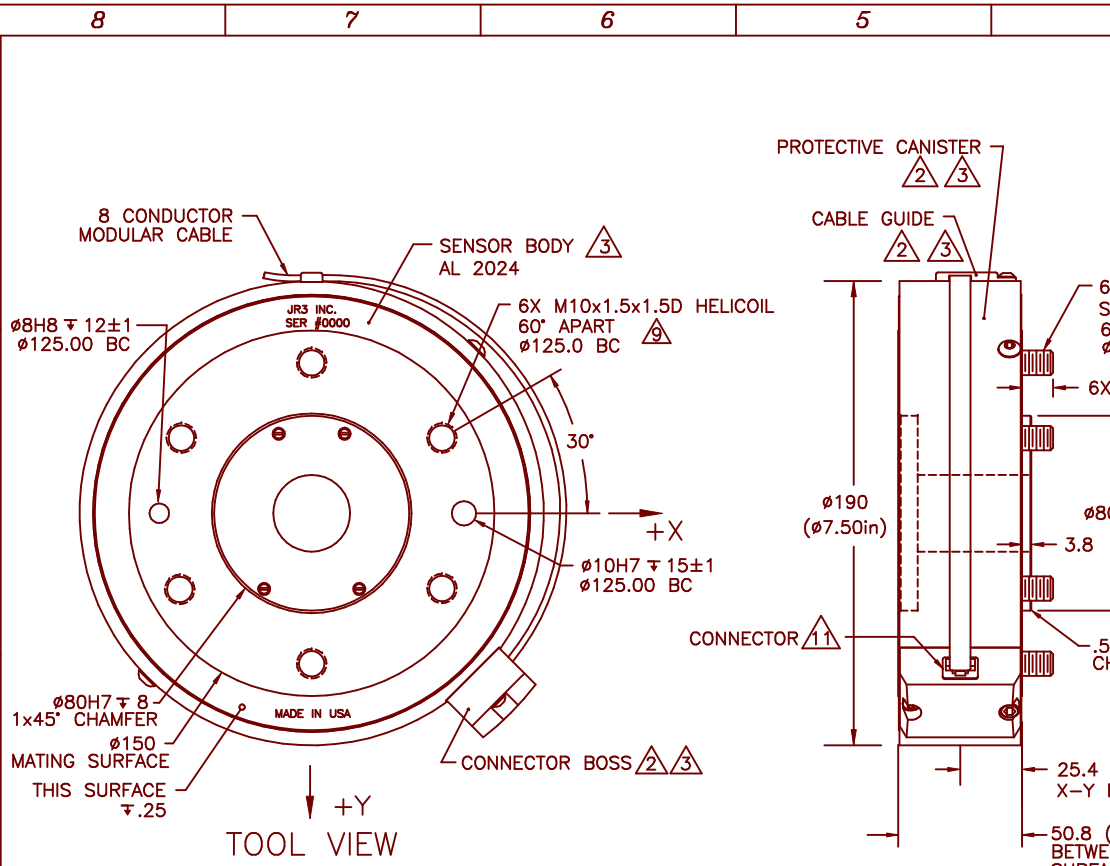


REVISIONS			
REV	DESCRIPTION	DATE	APPROVED
-	INITIAL RELEASE	07/27/00	G. SAKONA
A	SEE ECN E0745	02/23/03	G. SAKONA
B	CHANGE DOWEL HOLE LOCATIONS. UPDATE NOTES.	12/10/14	G. SAKONA



- NOTES:
- ALL DIMENSIONS ARE IN MILLIMETERS UNLESS OTHERWISE NOTED.
  - THIS NOTE HAS BEEN REMOVED.
  - ALUMINUM PARTS ARE ANODIZED, BLACK FOR SENSOR BODY, BLUE FOR CANISTER AND BOSS.
  - AVAILABLE STANDARD SENSOR LOAD RATINGS INCLUDE: 400, 1000 AND 2000N (100, 250 AND 500lb) WHERE MECHANICAL FULL SCALES (mFS) FOR EACH AXIS ARE AS FOLLOWS:  
mFS Fx & Fy = SENSOR LOAD RATING  
mFS Fz = SENSOR LOAD RATING \* 2  
mFS Mx, My, Mz = SENSOR LOAD RATING \* NOMINAL DIAMETER
  - ELECTRICAL FULL SCALES (eFS) CAN BE FACTORY PRE-SET BETWEEN 25% AND 100% OF mFS.
  - AXES SHOWN ASSUME OPPOSITE SIDE HELD FIXED. TENSION GIVES +Fz IN BOTH VIEWS. ROBOT VIEW IS RIGHT HAND RULE.
  - LENGTH OF CAPTIVE SCREW PROJECTION MAY BE ALTERED PER CUSTOMER REQUEST.
  - SCREWS ARE CAPTIVE, RETRACTABLE AND FREE TO ROTATE. TIGHTEN WITH HEX KEY THRU TOOL SIDE PLATE.
  - MAXIMUM ALLOWED PENETRATION OF MOUNTING SCREWS INTO SENSOR TOOL SIDE IS 20mm (.80in).
  - TORQUE SCREWS TO 48Nm (420inlb). TIGHTEN IN 3 STEPS: SNUG, HALF, FULL TORQUE, FOLLOWING AN A-C-E-B-D-F SEQUENCE.
  - CONNECTOR IS 8 PIN MODULAR FEMALE.

<b>TITLE:</b> INTERFACE, 75E20 SENSOR, I125 BOLT PATTERN, DIGITAL OUTPUT			
<b>MAT'L:</b> AS SHOWN	<b>MODEL:</b>	<b>DRAWN:</b> GCS	
<b>TOLERANCES:</b> (UNLESS OTHERWISE NOTED) X = ±.25mm .X = ±.10mm .XX = ±.025mm ANGLES = ±0.1°		<b>SCALE:</b> 1/2 AND NOTED	
		<b>DWC SIZE:</b> B	
		<b>DWG NO:</b> 4883	<b>REV:</b> B
<b>JR3, INC. WOODLAND, CA 95776</b>			<b>SHEET 1 OF 1</b>