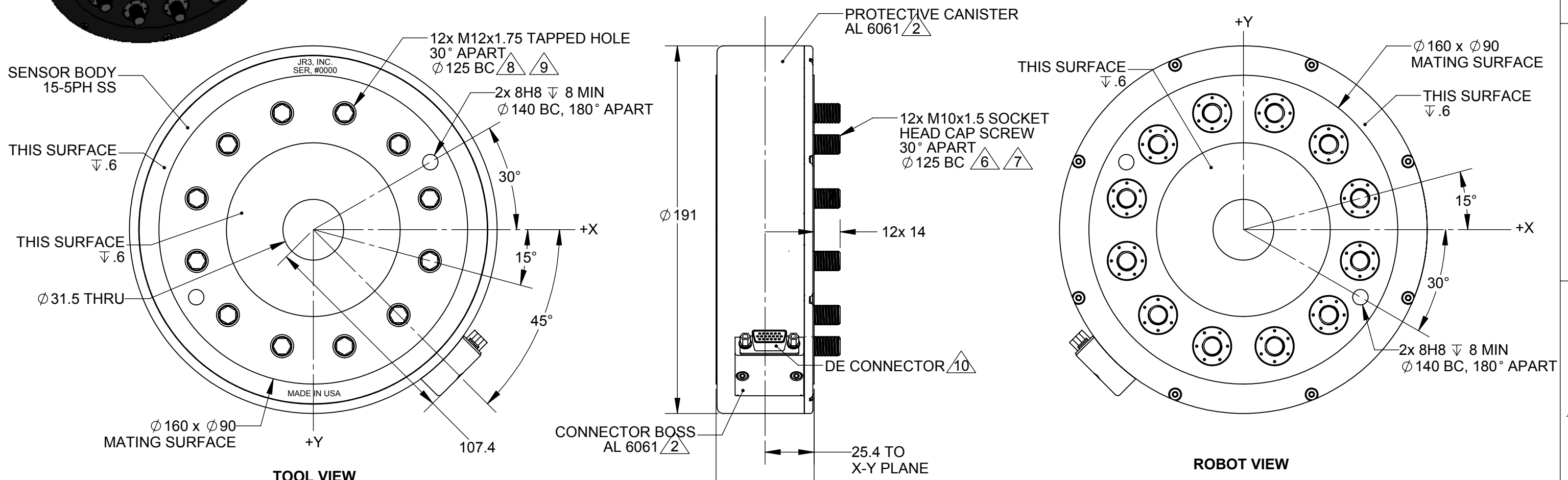
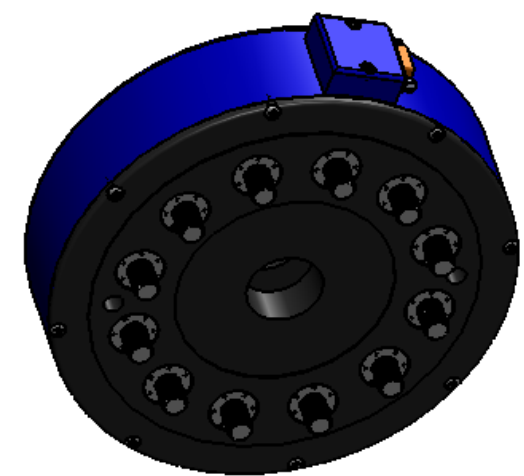


REVISIONS				
REV	DESCRIPTION	REV BY	DATE	APPROVED
-	INITIAL RELEASE	N/A	09/08/2010	G. SAKONA
A	SEE ECN E1000	GCS	08/30/2011	G. SAKONA
B	SEE ECN E1076	KSN	05/07/2013	G. SAKONA



- NOTES:
- ALL DIMENSIONS ARE IN MILLIMETERS [IN] UNLESS OTHERWISE NOTED.
 - ALUMINUM PARTS ARE ANODIZED. BLUE FOR CANISTER & BOSS.
 - STANDARD LOAD RATINGS INCLUDE: 3000 AND 6000N (650 AND 1300LB)
WHERE MECHANICAL FULL SCALES (mFS) FOR EACH AXIS ARE AS FOLLOWS:
 mFS F_{x,y} = SENSOR LOAD RATING
 mFS F_z = SENSOR LOAD RATING * 2
 mFS M_{x,y,z} = SENSOR LOAD RATING * SENSOR DIAMETER
 - ELECTRICAL FULL SCALES (eFS) CAN BE FACTORY PRE-SET BETWEEN 25% AND 100% OF mFS.
 - AXES SHOWN ASSUME OPPOSITE SIDE HELD FIXED. ROBOT VIEW IS RIGHT HAND RULE. TENSION GIVES +F_z OUTPUT IN BOTH VIEWS.
 - NOTED SCREWS ARE CAPTIVE, FREE TO ROTATE, AND RETRACTABLE. TIGHTEN WITH HEX KEY THROUGH MOUNTING SCREWHOLES IN SENSOR TOOLSIDE.
 - TORQUE M10 SCREWS TO 65Nm (570in-lb) IN 3 STEPS: SNUG, HALF, FULL, FOLLOWING A SEQUENCE OF EVERY FIFTH SCREW.
 - MAXIMUM ALLOWED PENETRATION OF MOUNTING SCREWS INTO SENSOR TOOLSIDE IS 16mm.
 - TORQUE M12 SCREWS TO 110Nm (970in-lb) IN 3 STEPS: SNUG, HALF, FULL, FOLLOWING A SEQUENCE OF EVERY FIFTH SCREW.
 - CONNECTOR IS DE-9P FOR INTERNAL ANALOG, DE-19P FOR EXTERNAL ELECTRONICS.

TITLE: INTERFACE, 75E20 SENSOR, M125E, STAINLESS STEEL

TOLERANCES: (UNLESS OTHERWISE NOTED)	X = ±.25mm .X = ±.10mm .XX = ±.025mm ANGLES = ±0.1°	DWG SIZE: B	DRAWN BY: K. NIELSEN
		SCALE: 1:1 AND NOTED	DWG NO: 4971
			REV: B
SHEET 1 OF 1			

JR3, INC. WOODLAND, CA 95776