



Driver Installation Manual

Windows XP (32/64-Bit)
Windows Vista (32/64 Bit)
Windows 7 (32/64-Bit)
Windows 8/8.1 (32/64-Bit)
Windows 10 (32/64-Bit)

JR3, Inc.
22 Harter Ave.
Woodland, CA 95776
www.JR3.com

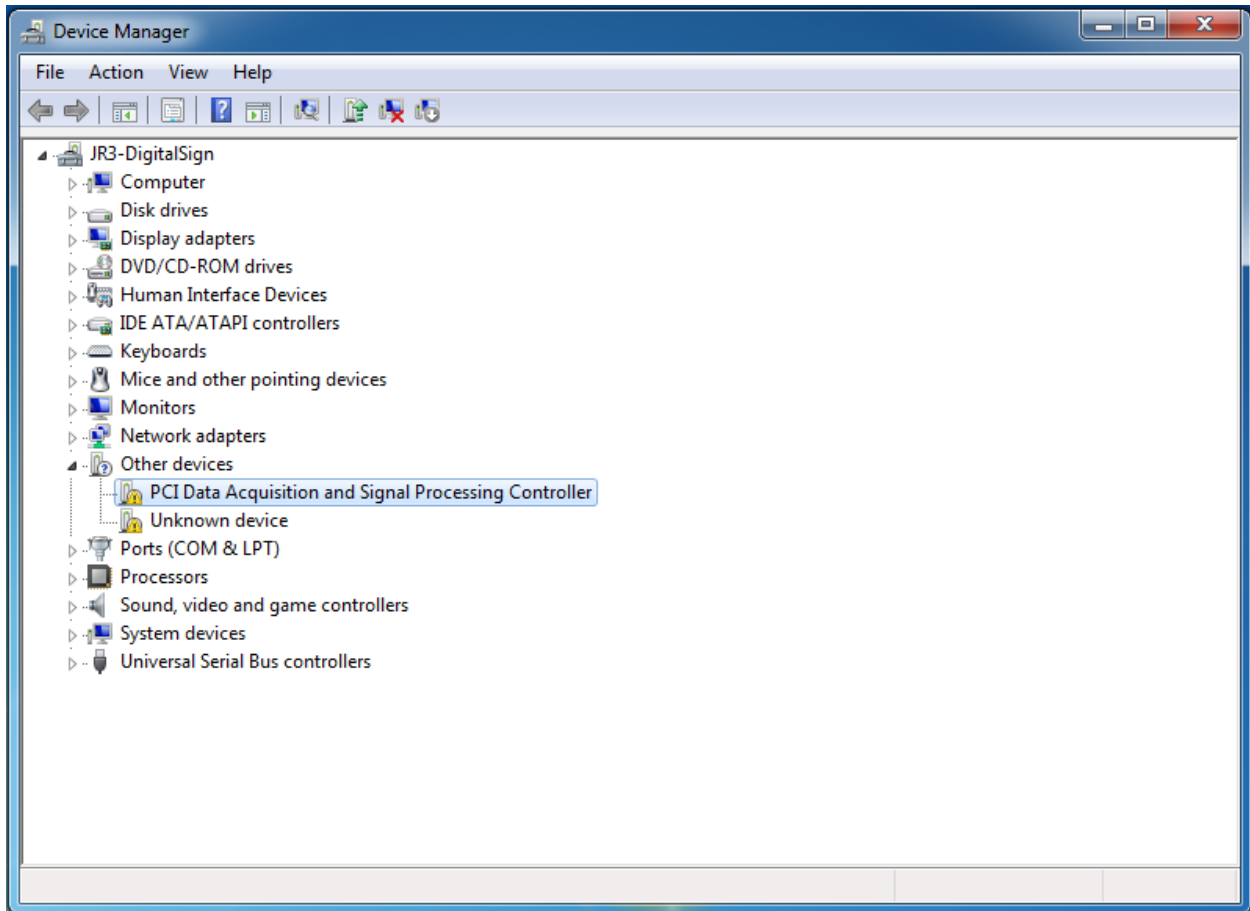
Doc# 59001 Rev-
02 April, 2015

NOTE: This manual specifically covers the driver installation/update process for Windows 7. The process will be similar for the other operating systems listed.

NOTE: Before beginning any driver installation/update process, make sure you have downloaded the latest version of the driver from the JR3 website. Un-zip the driver folder to a location that you can easily locate, locations such as your Desktop or the Downloads folder work well.

Driver Installation for Windows 7 (32/64-bit)

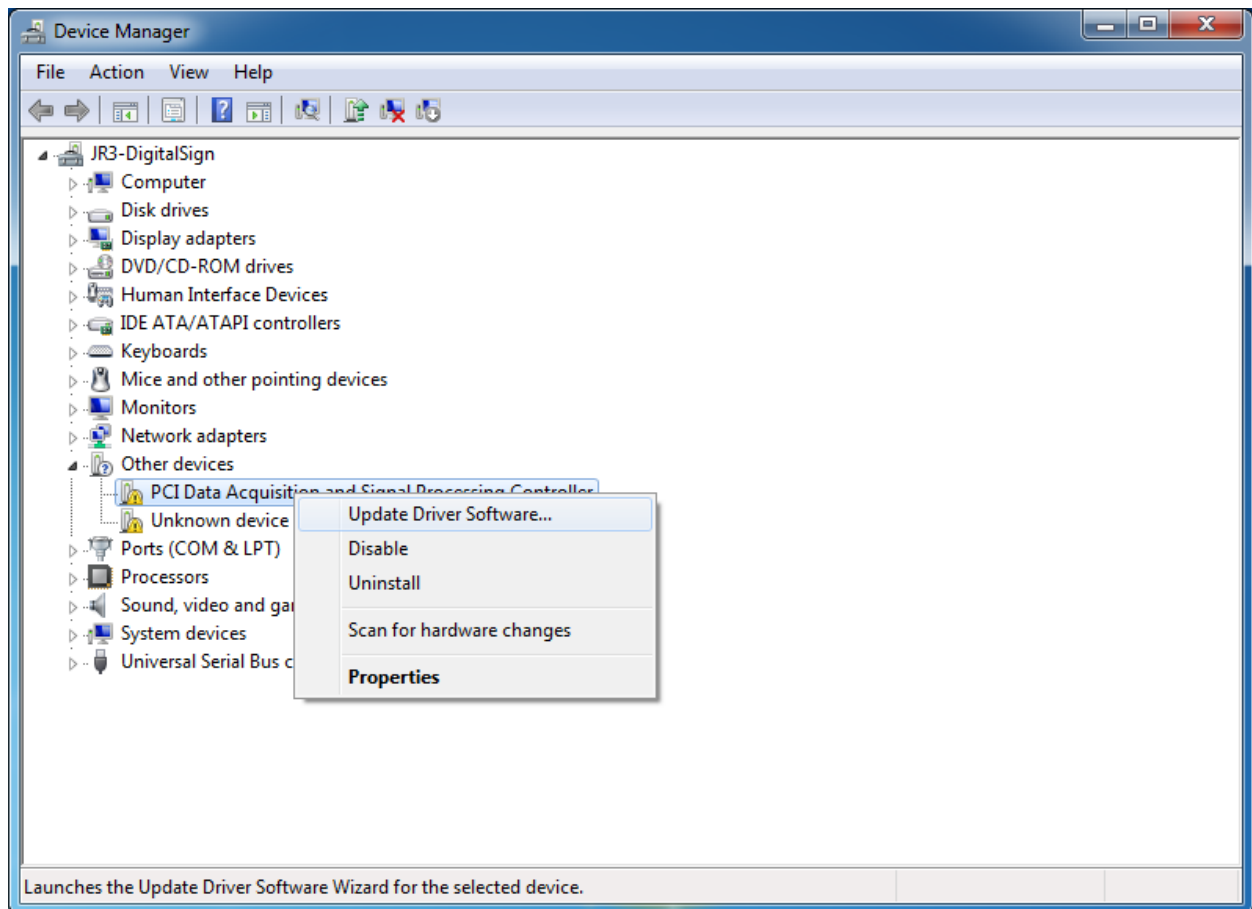
Step 1 - Open Device Manager (Windows Button -> right-click on 'Computer' -> select 'Properties', from the new window, left hand side, select 'Device Manager')



[Figure 1 - Device Manager]

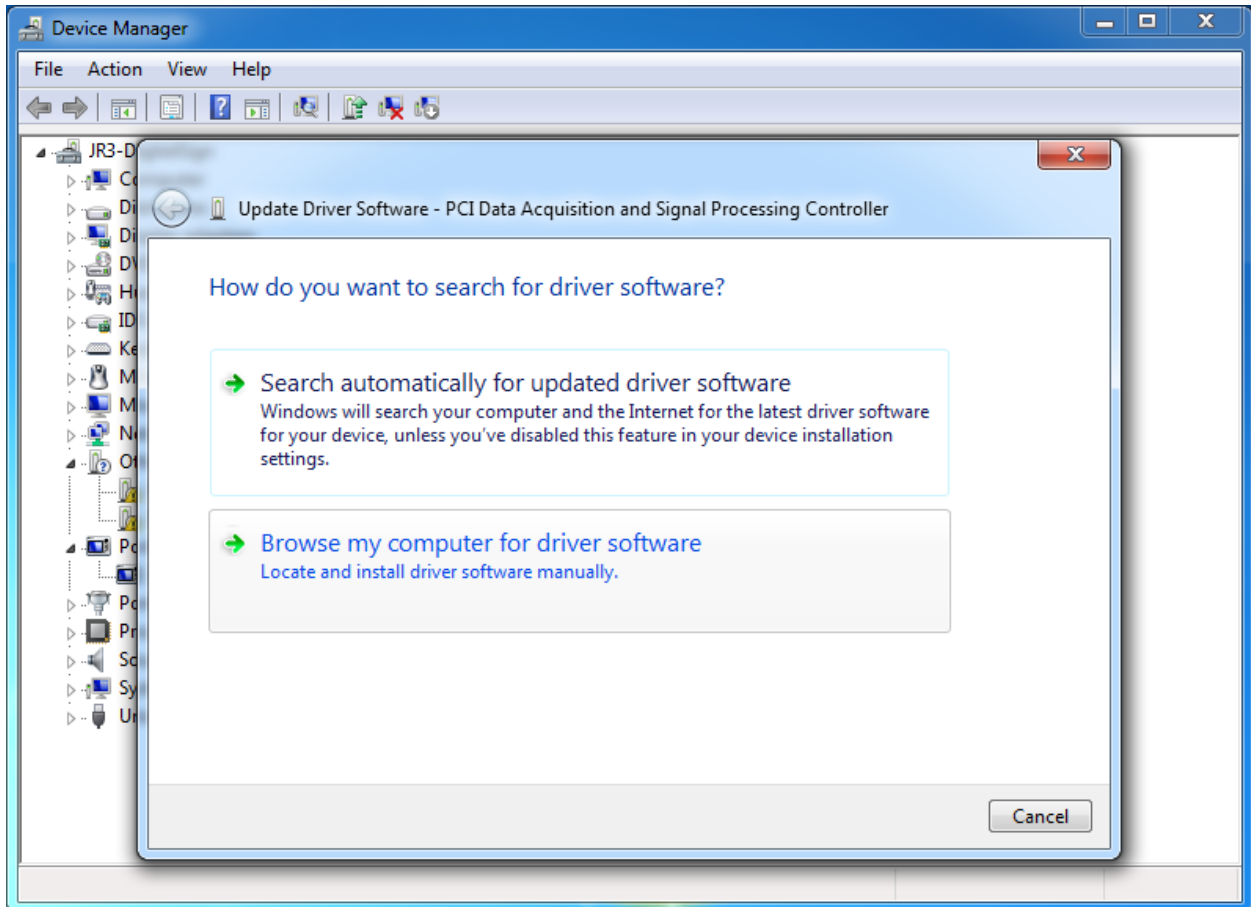
If you just added a JR3 PCI card to your computer, it will show up as an unknown device as highlighted in figure 1 - "PCI Data Acquisition and Signal Processing Controller"

Step 2 - Right-click on this device and select 'Update Driver Software...' as shown in Figure 2.



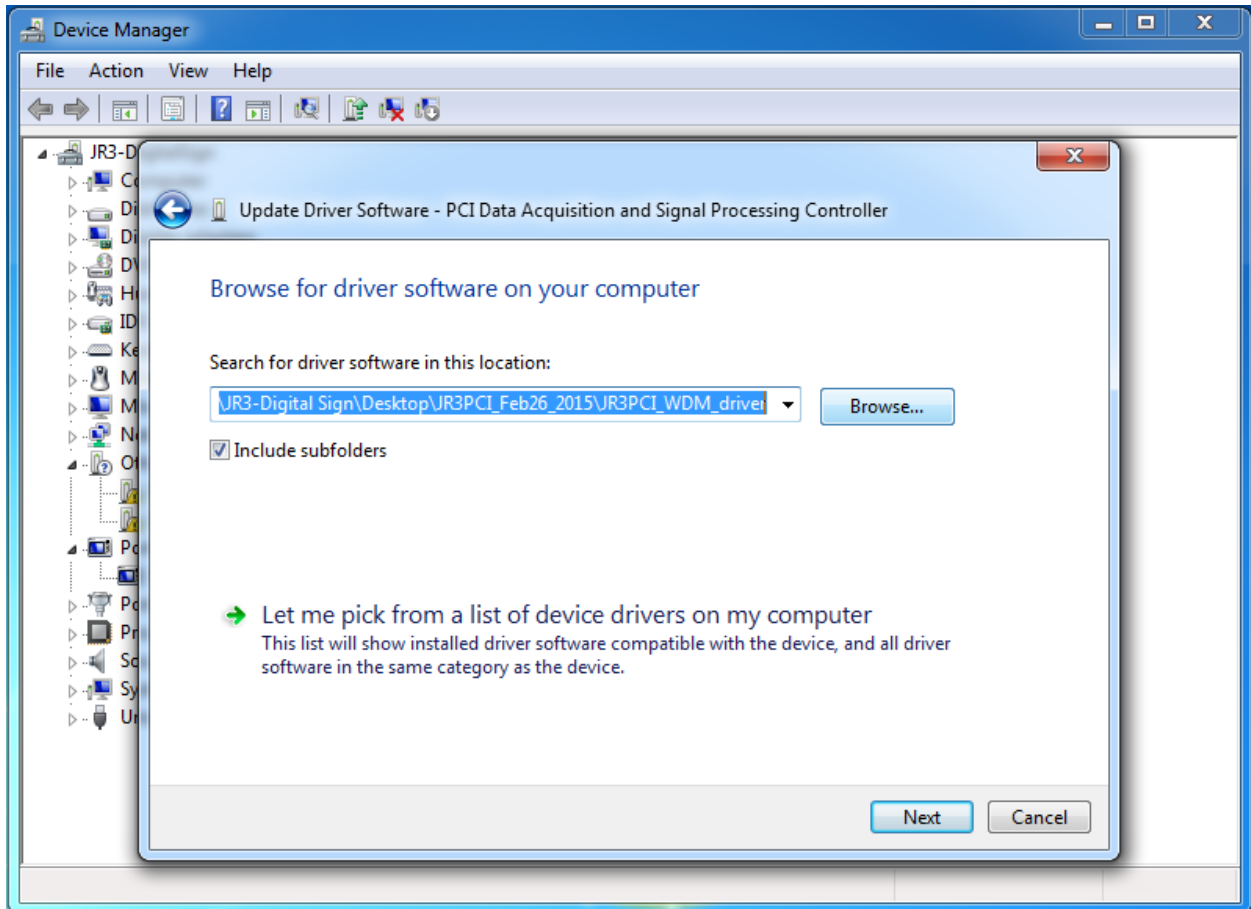
[Figure 2 - Update Driver Software...]

Step 3 - The next window that appears will ask you how you want to find the new driver, select 'Browse my computer for driver software', as seen in Figure 3.



[Figure 3 - Browse for Driver]

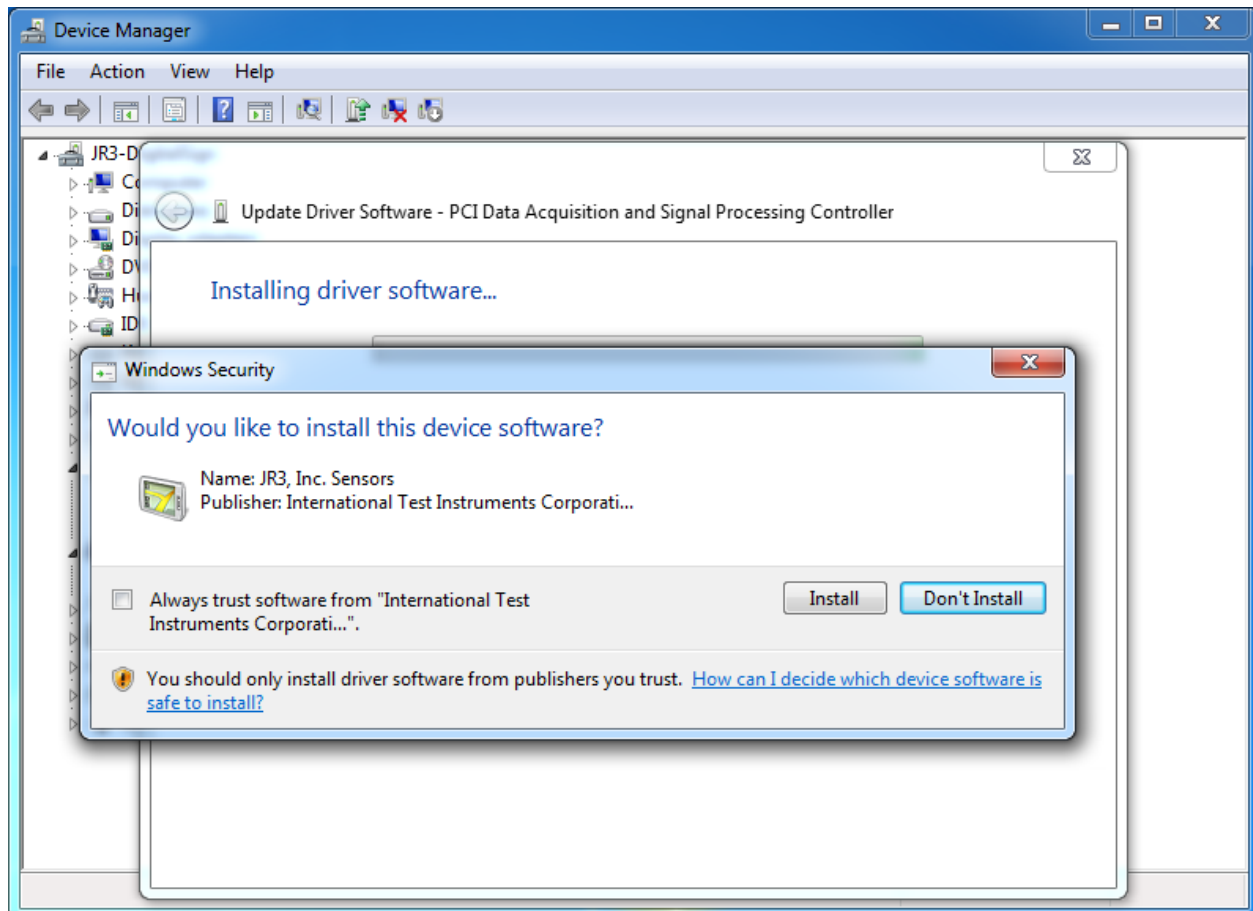
Step 4 - In the next window, select 'Browse...' and navigate to the location of the un-zipped driver on your computer. Select the Folder "JR3PCI_WDM_driver" and make sure the checkbox for 'Include subfolders' is checked. See Figure 4.



[Figure 4 - Browse to the location of the driver]

Select the 'Next' button.

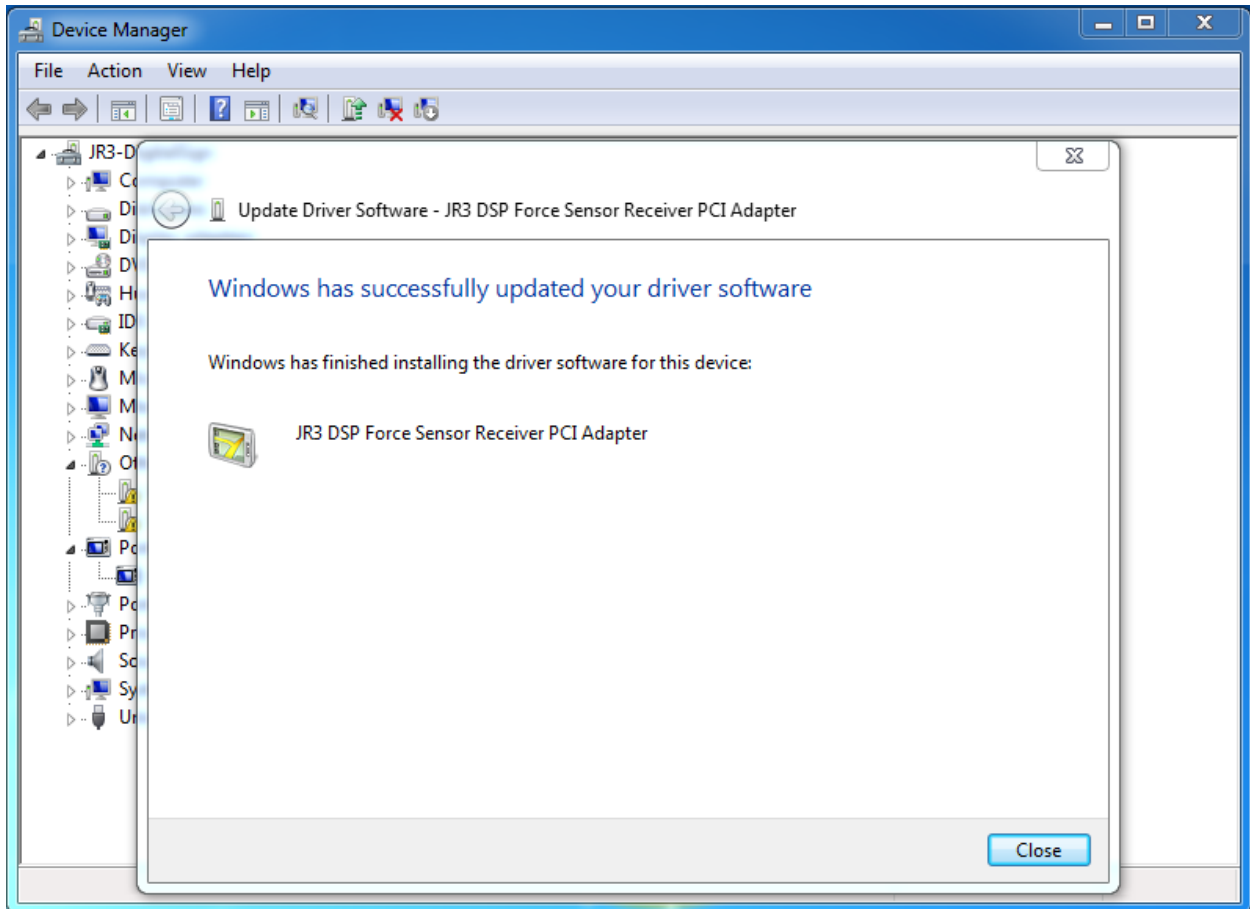
Step 5 - The computer may take a few moments to find the driver, the next window that should appear will be a driver installation confirmation screen, as seen in Figure 5.



[Figure 5 - Driver installation confirmation]

Select 'Install'

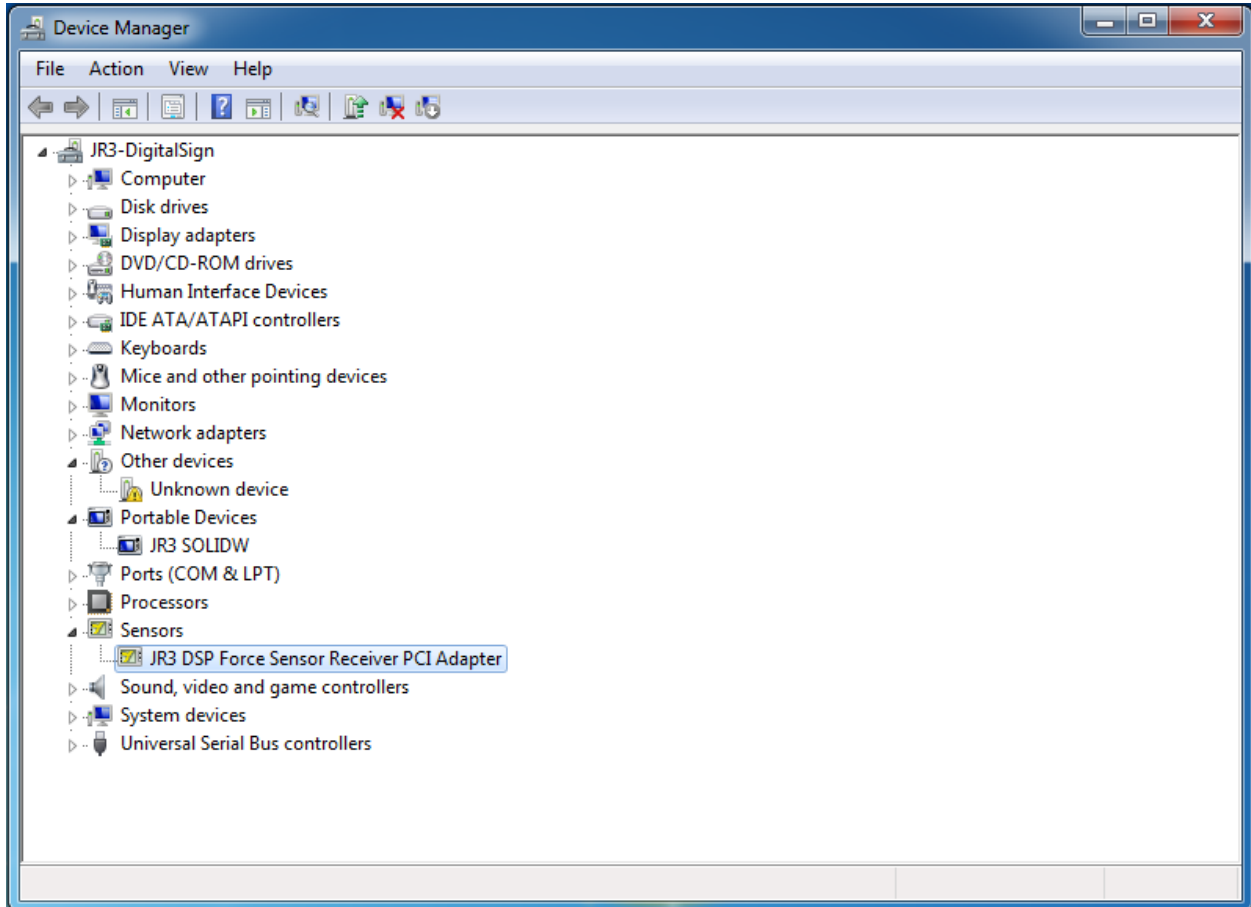
Step 6 - It may take a few moments for the computer to finish installing the driver. Once this operation completes, you will see a new window, as seen in Figure 6 indicating the driver was successfully installed.



[Figure 6 - Driver Installed Successfully]

Select 'Close'

Step 7 - When you have closed the window from Figure 6, you will be returned to the Device Manager window and a new device should be registered under the "Sensors" device heading. See Figure 7.



[Figure 7 - New Sensor Device Recognized]

You have completed the installation of the New JR3 PCI card device drivers.